
**BHARAT FORGE
GLOBAL HOLDING**



A large background image consisting of a grid of blue spheres that create a 3D effect, receding into the distance.

CORPORATE SOCIAL RESPONSIBILITY (CSR)

Nachhaltigkeit ist seit jeher ein Grundprinzip des Handelns der Bharat Forge Global Holding GmbH. Es ist als Unternehmensziel verankert. Der Umweltschutz ist im Leitbild genannt, wie auch der Fokus auf langfristigen wirtschaftlichen Erfolg in Verbindung mit einer menschlichen Leistungskultur und hoher gesellschaftlicher Verantwortung. Eine nachhaltige Unternehmensführung liegt uns daher besonders am Herzen. Mit diesem Report möchten wir über die verschiedenen Facetten der Nachhaltigkeitsaktivitäten informieren.

Sustainability has always been a fundamental principle of business actions for Bharat Forge Global Holding. It is a business objective. Environmental protection is mentioned in our companies' mission statement, as well as the focus on long-term economical success, not least because of sustainable human resource management. A sustainable management of the group is especially important to us. With this report we would like to present the different facets of our sustainability efforts.

Nachhaltigkeit setzt sich aus drei wesentlichen Gesichtspunkten zusammen:

- Ökonomische Dimension
- Ökologische Dimension
- Gesellschaftliche Dimension
 - Alle drei Dimensionen sind gleichwertig
 - Nachhaltigkeit ist mehr als nur Umwelt

Sustainability is composed of three aspects:

- Economic dimension
- Ecologic dimension
- Social dimension
 - All three dimensions are of equal rank
 - Sustainability is more than environment

Unter dem Dach der Bharat Forge Global Holding GmbH sind als operative Unternehmenseinheiten die Bharat Forge CDP GmbH im Verbund mit der Bharat Forge Daun GmbH, die Bharat Forge Aluminiumtechnik GmbH sowie die Bharat Forge Kilsta AB (Schweden) und Mécanique Générale Langroise (France) vereint.

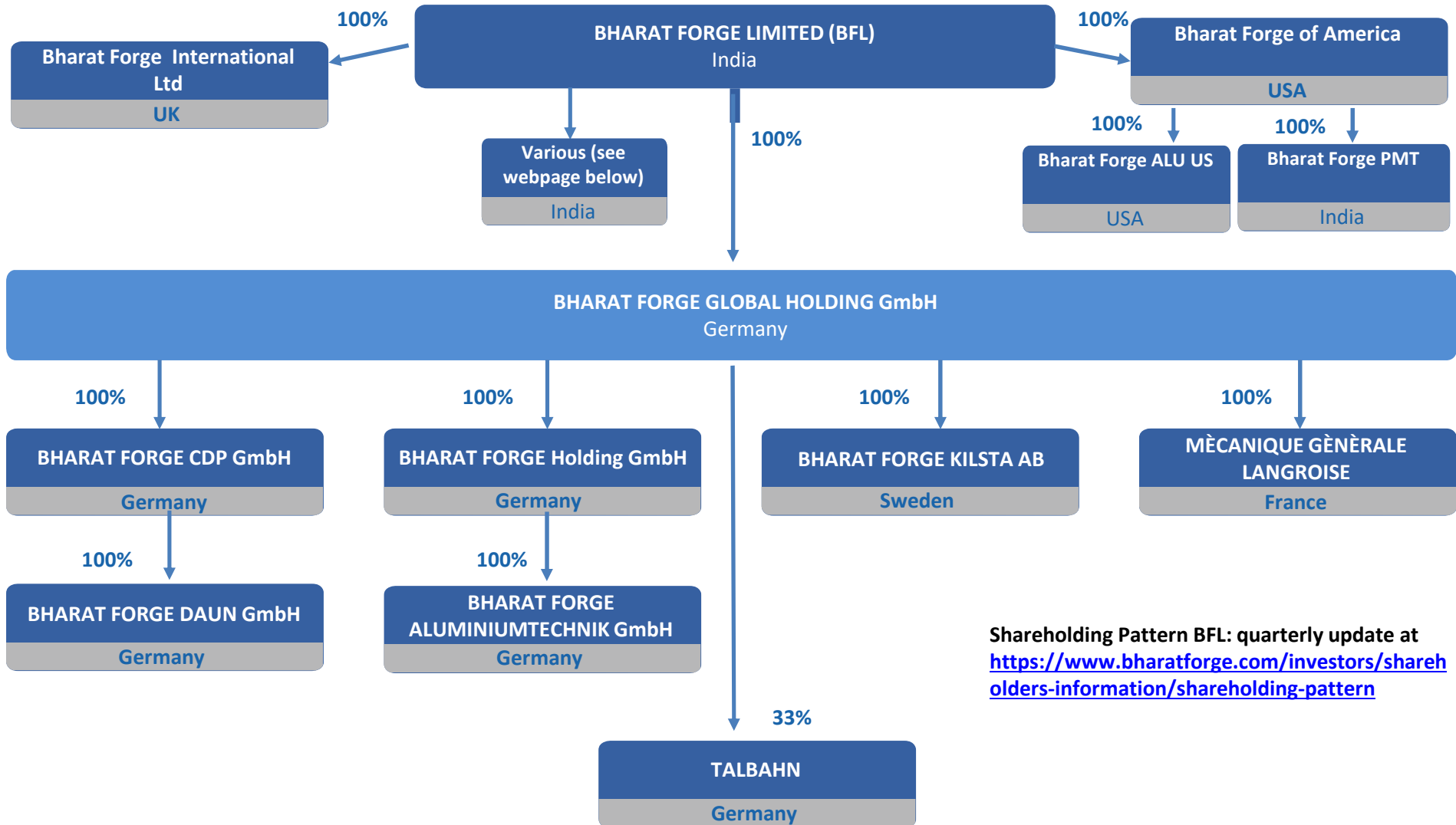
Under the umbrella of Bharat Forge Global Holding GmbH, the operating companies are Bharat Forge CDP GmbH in conjunction with Bharat Forge Daun GmbH, Bharat Forge Aluminumtechnik GmbH, Bharat Forge Kilsta AB (Sweden) and Mécanique Générale Langroise (France).

Die Bharat Forge Global Holding gehört zur Bharat Forge Limited, einer der führenden Schmiedegruppen der Welt. Die BFGH Gesellschaften beschäftigen sich mit der Konstruktion, Produktion und Lieferung von Aluminium- und Stahl-Schmiedeteilen für internationale Kunden. Sie bieten geschmiedete Stahlprodukte für LKW und PKW-Chassis, Antriebsstränge, Bahntechnik und Nicht-Automobil- / Maschinenteile; sowie Aluminium-Schmiede-Lösungen für PKW Chassis. Die Unternehmen bieten auch Werkzeuge, Matrizen und Vorrichtungen für die Herstellung entsprechender Produkte an.

Bharat Forge Global Holding belongs to Bharat Forge Limited, one of the leading forging groups in the world. BFGH Companies are engaged in the design, production, and supply of aluminum and steel forged components for international customers. It offers products, including truck-, PassCar -chassis, powertrains, railway technology, and non-automotive/machinery parts; and aluminum forging solutions for PassCar Chassis such as control arms, knuckles. The company also provides tools, dies, and fixtures for relevant products.

Bharat Forge Group Legal Group Structure

**BHARAT FORGE
GLOBAL HOLDING**



Shareholding Pattern BFL: quarterly update at <https://www.bharatforge.com/investors/shareholders-information/shareholding-pattern>

Bharat Forge Group

Forging Facilities

**BHARAT FORGE
GLOBAL HOLDING**



Bharat Forge Group

1	Bharat Forge Limited	BFL	Pune, India
2	Bharat Forge CDP	BFCDP	Ennepetal, Germany
3	Bharat Forge Daun	BFDaun	Daun, Germany
4	Bharat Forge Aluminiumtechnik	BFAT	Brand-Erbisdorf, Germany
5	Bharat Forge Kilsta	BFK	Karlskoga, Sweden
6	Mécanique Générale Langroise	MGL	Saints-Geosmes, France
7	Bharat Forge PMT	BF PMT	Surgoinsville, USA
8	Bharat Forge Aluminum USA, Inc.	BFALUUS	Sanford, USA

**Bharat Forge
Global Holding**

Bharat Forge Production Facilities

**BHARAT FORGE
GLOBAL HOLDING**



Bharat Forge Global Holding Subgroup

2022	Bharat Forge Ltd. [1]	Bharat Forge CDP [2]	Bharat Forge Daun [3]	Bharat Forge Aluminium-technik [4]	Bharat Forge Kilsta [5]	Mécanique Générale Langroise [6]	Bharat Forge PMT Technologie [7]	Bharat Forge Aluminum USA, Inc [8]
Capacity [t]	413.000	95.000 Steel 6.000 Alu	Tools, Machining	16.000	80.000	Machining	40.000	10.000
Employees	~ 5000	~ 500	~ 100	~ 530	~ 300	~ 40	~ 150	225
Turnover [Mio.€]	762	197	19	113	89	3	40	65
Locations	5	2	1	1	1	1	1	1

Press Lines

Bharat Forge Global Holding Subgroup

**BHARAT FORGE
GLOBAL HOLDING**



Press size in tons	 16.000	 8.000- 12.500	 2.500- 6.000	 Others
No. of Presses	3	6	16	Hammers (up to 80 mt) Open Die Presses (Max. Ingot 70 tons)
Weight Range in kg	75-200	30-100	2-50	Ring Rolling (up to 4,5 m dia)

Key Facts

Bharat Forge CDP

BHARAT FORGE
GLOBAL HOLDING



- Founded: 1839
- Turnover: 197 mn EUR
- Material cons.: 95.000 t (Steel) / 6.000 t (Aluminum)
- Weight range: 2 – 70 kg
- Employees: ~ 500
- Key Products: Truck Knuckles, Crankshafts, Pistons, Tips, Railway, Parts for Electric Cars/Hybrids

Key Facts

Bharat Forge Aluminiumtechnik

BHARAT FORGE
GLOBAL HOLDING



Brand-Erbisdorf
Germany



- Founded: 1996
- Turnover: 113 mn EUR
- Material cons.: 16,000 t (Aluminium)
- Weight range: 2 – 7 kg
- Employees: ~ 530
- Key Products: Aluminum Chassis Parts for Passenger Cars & Motorcycles

Key Facts

Bharat Forge Daun

BHARAT FORGE
GLOBAL HOLDING



- Founded: 1972
- Turnover: 19 mn EUR
- Employees: ~ 100
- Key Products: Tools, Machining



Key Facts

Bharat Forge Kilsta

BHARAT FORGE
GLOBAL HOLDING



- Founded: 1646
- Turnover: 89 mn EUR
- Material cons.: 80,000 t (Steel)
- Weight range: 2 – 350 kg
- Employees: ~ 300
- Key Products: Front Axle & Pusher Beams, Crankshafts, Lever Arms

Key Facts

Mécanique Générale Langroise

BHARAT FORGE
GLOBAL HOLDING



Saints-Geosmes,
France



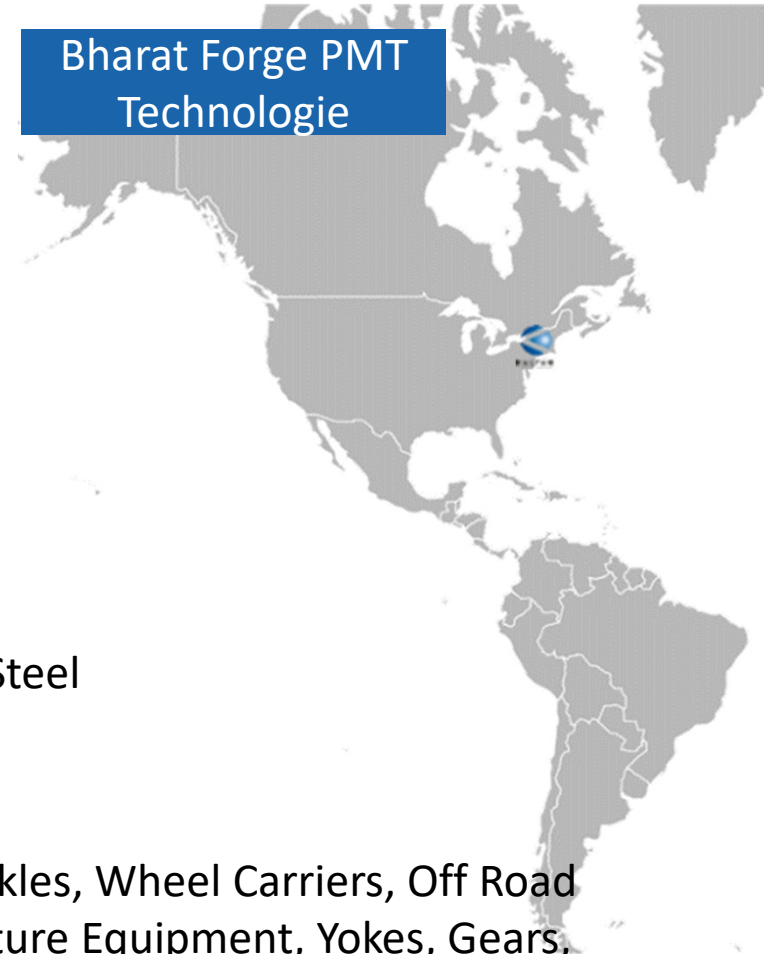
- Founded: 1991
- Turnover: 3 mn Eur
- Weight range: up to 18 tons
- Employees: ~ 40
- Key Products: Machining (Oil & Gas, Drilling, Nuclear, Aerospace, Rail)

Key Facts BF PMT

BHARAT FORGE
GLOBAL HOLDING



Bharat Forge PMT
Technologie



- Founded: 1996
- Turnover: 40 Mio EUR
- Material cons.: 40.000 Metric Tons Alloy Steel
- Weight range: 2 – 43 kg
- Employees: ~ 150
- Key Products: Pistons, Heavy Truck Knuckles, Wheel Carriers, Off Road Construction- and Agriculture Equipment, Yokes, Gears, Towing Hooks, Oil/Gas Drilling tools

Key Facts

BF ALU US

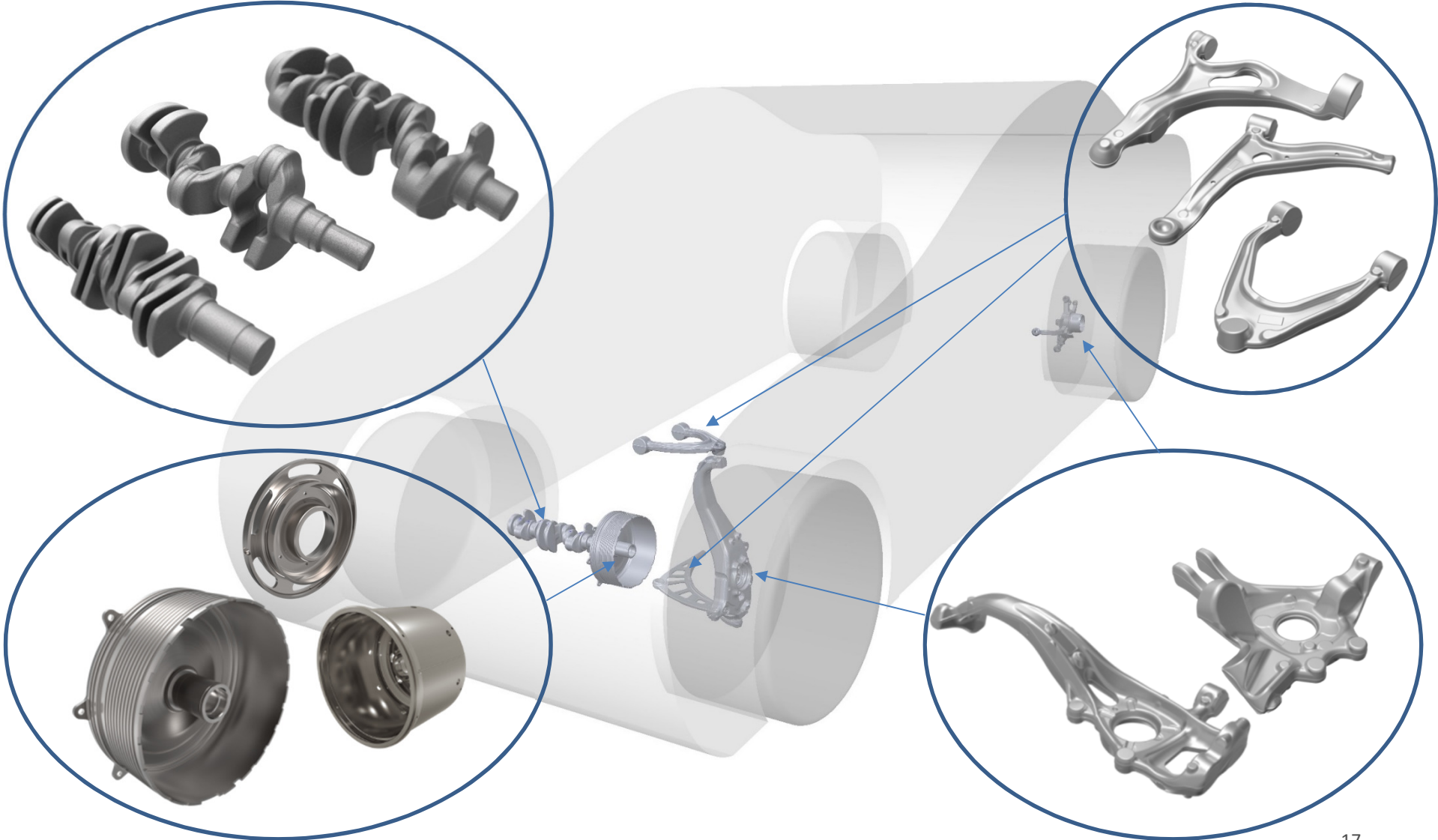
BHARAT FORGE
GLOBAL HOLDING



- **Founded:** 2020
- **Turnover:** 65 Mio EUR
- **Material cons.:** 10.000 t
- **Weight range:** 2 – 11kg
- **Employees:** 225
- **Key Products:** Aluminum Chassis Parts for Passenger Cars

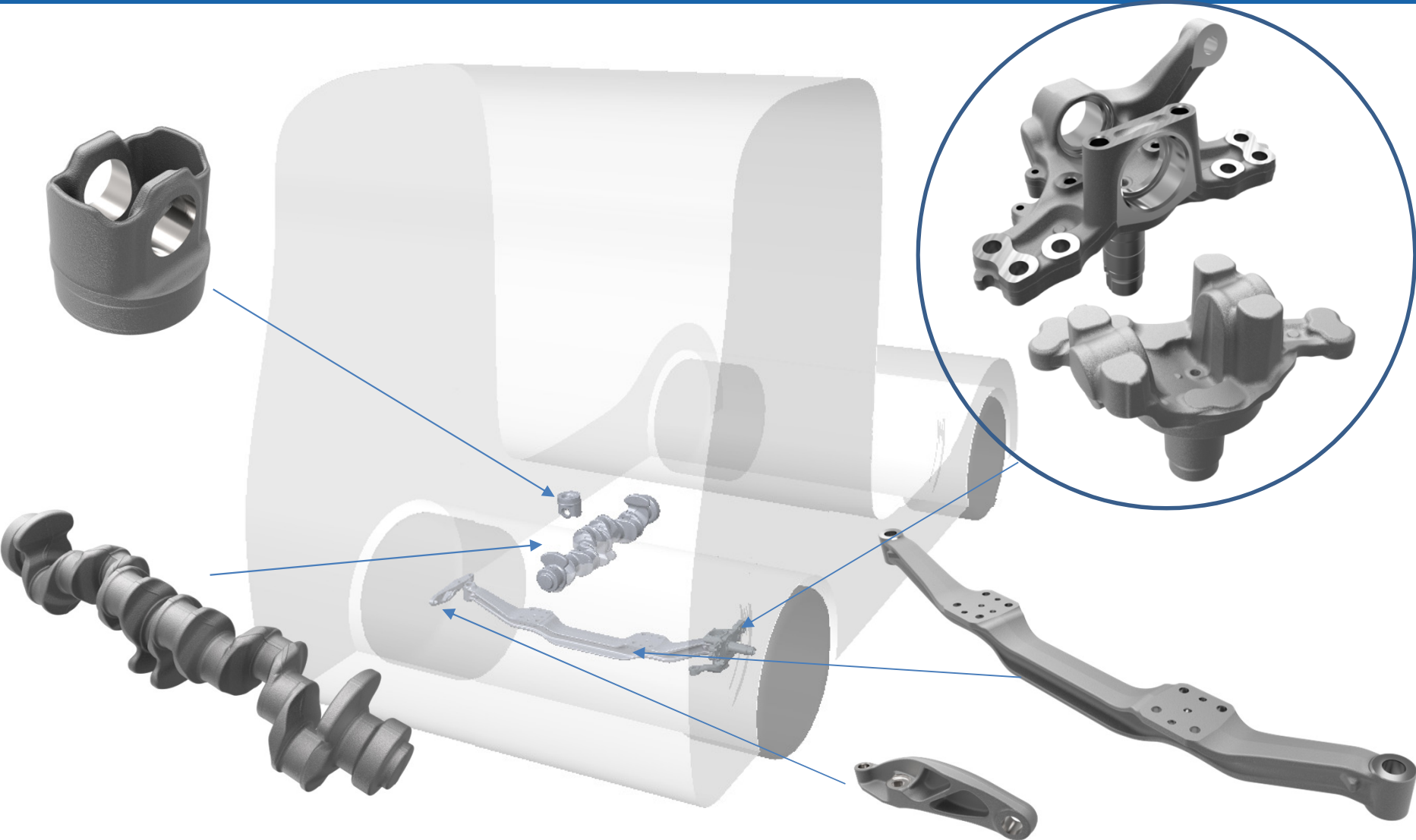
Products
Passenger Car

BHARAT FORGE
GLOBAL HOLDING



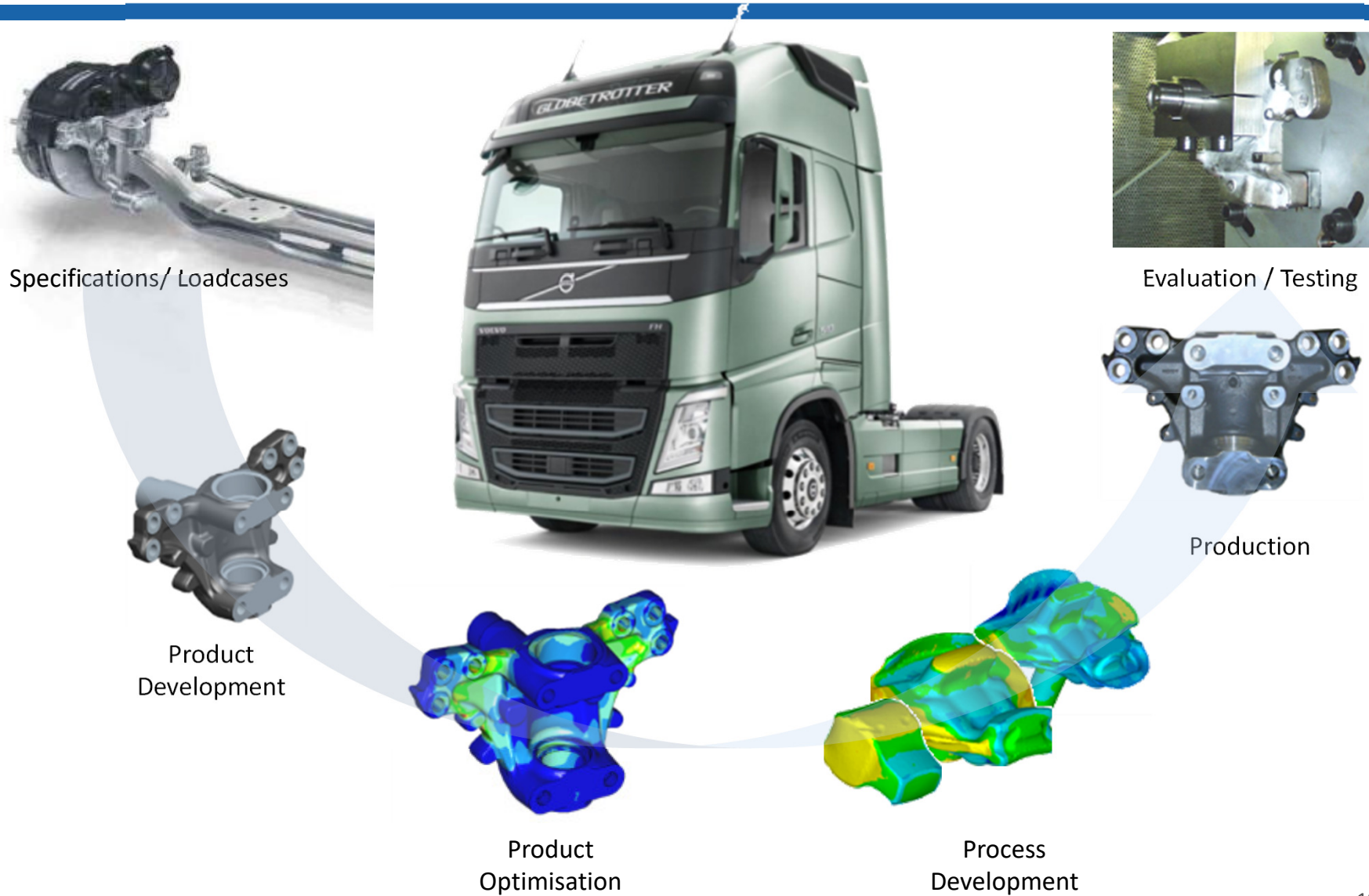
Products
Commercial Vehicle

BHARAT FORGE
GLOBAL HOLDING



Development Chain Full Service

BHARAT FORGE
GLOBAL HOLDING



Machining Capacity For Hybrid Components (BF Daun)

BHARAT FORGE
GLOBAL HOLDING



- BFGH delivers into zero emission passenger vehicles
- ... and works – in cooperation with universities - on new projects like light weight shafts for Electric Vehicles

■ Komplette Stadienfolge Rotorwelle BMW i3

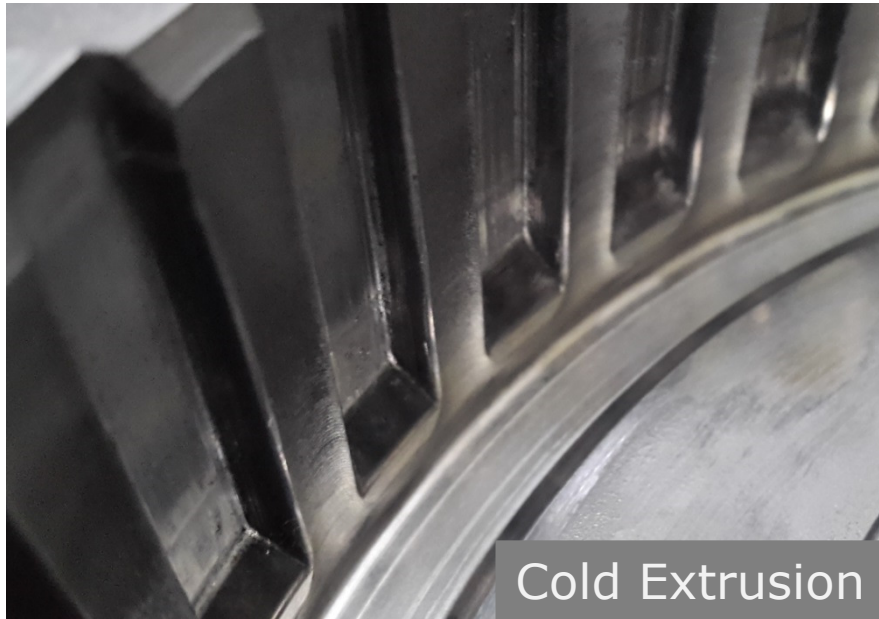


© Fraunhofer IPT | BHARAT FORGE CDP | Fraunhofer IPT

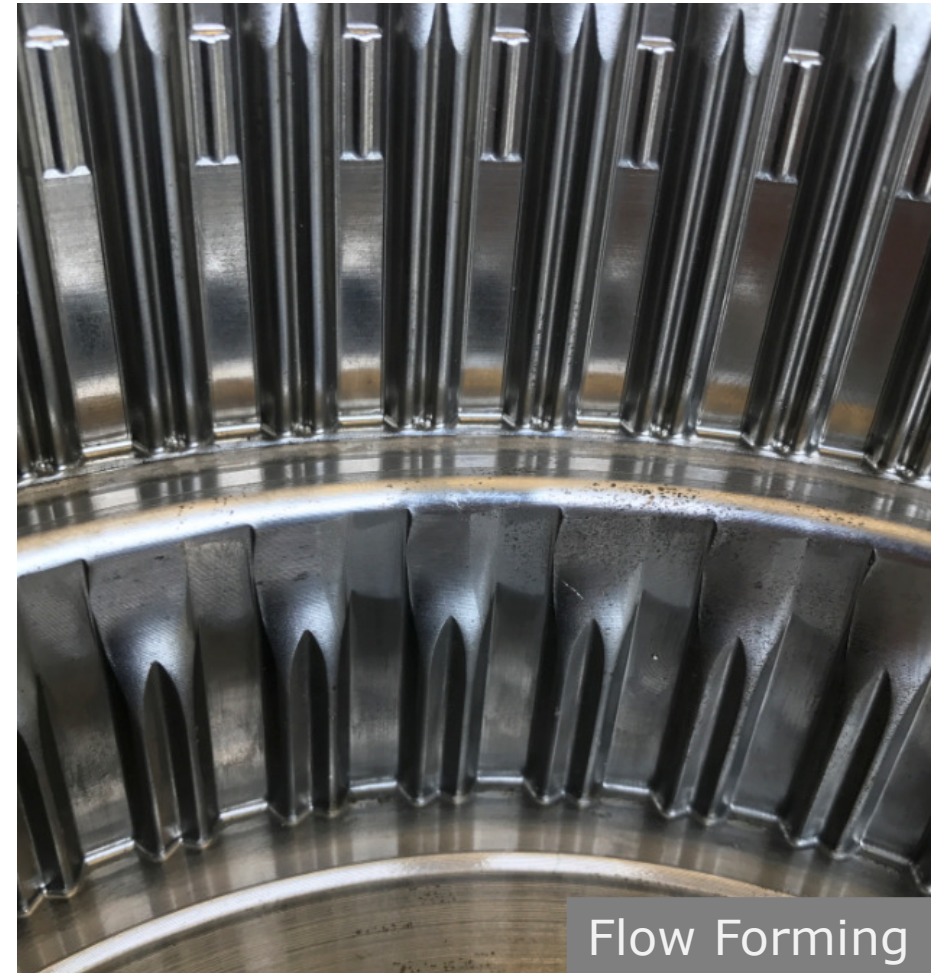


Comparison Cold Forming vs. Flow Forming

BHARAT FORGE
GLOBAL HOLDING

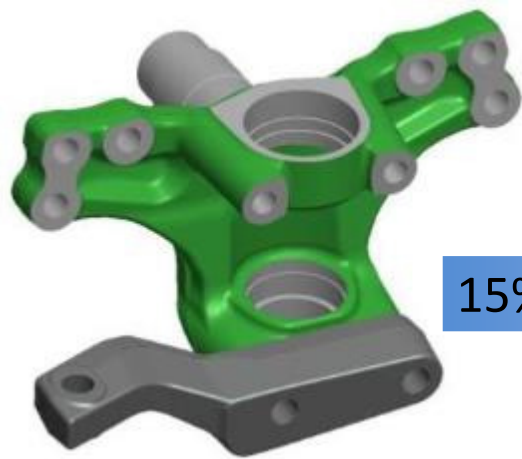


- BFGH develops resource efficient manufacturing processes by reduction of machining

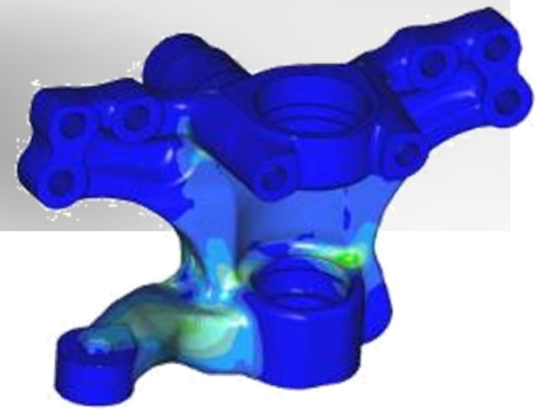
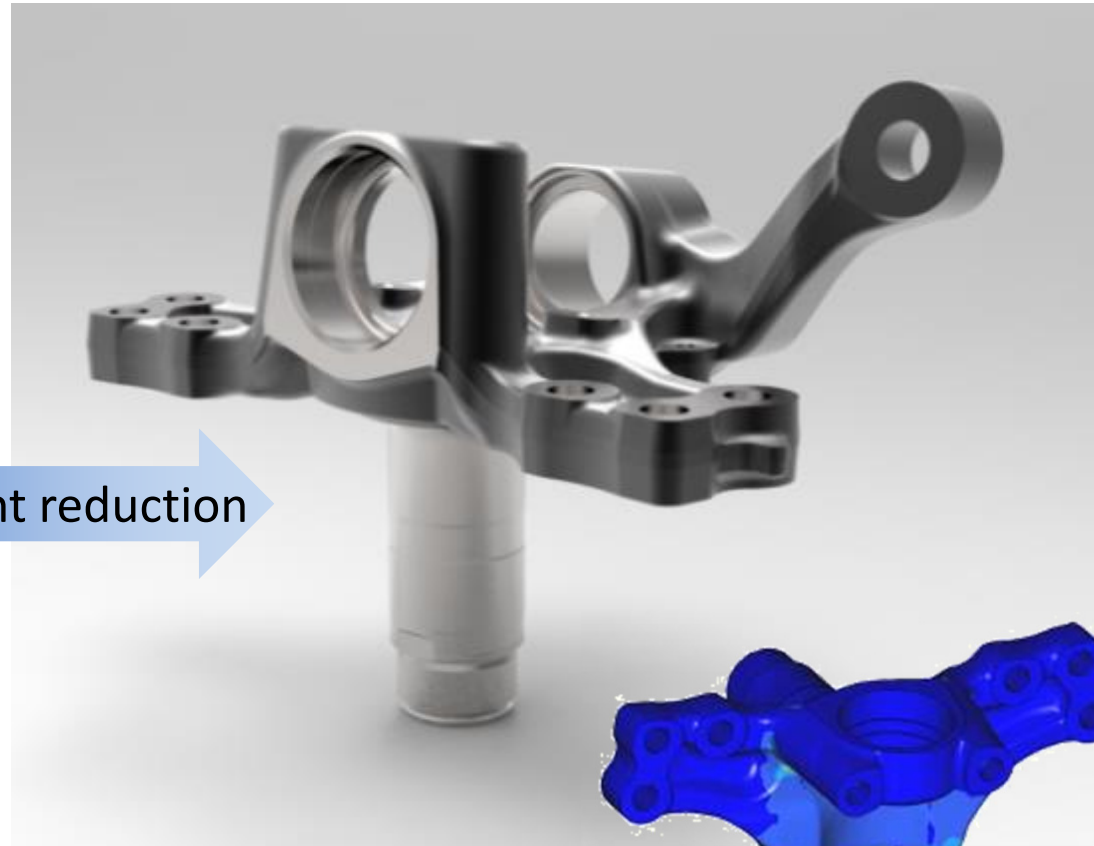


Products Optimization Integration of Tie Rod Arm

Weight reduction leads
to CO₂ reduction



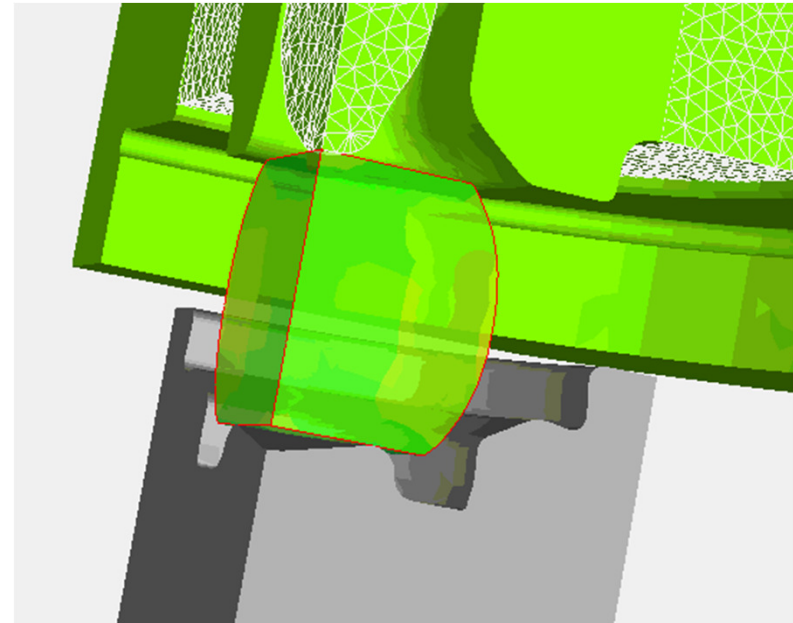
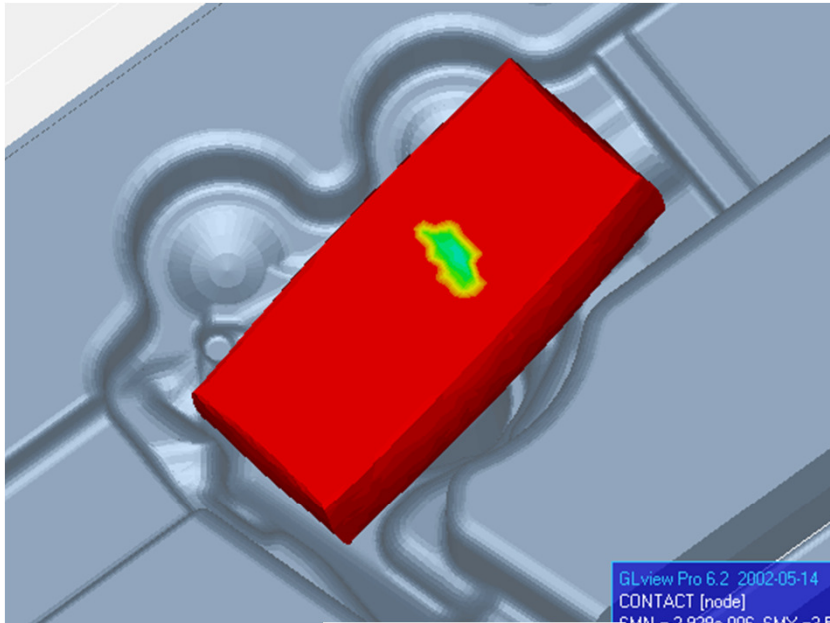
15% weight reduction



Forging Simulation Example

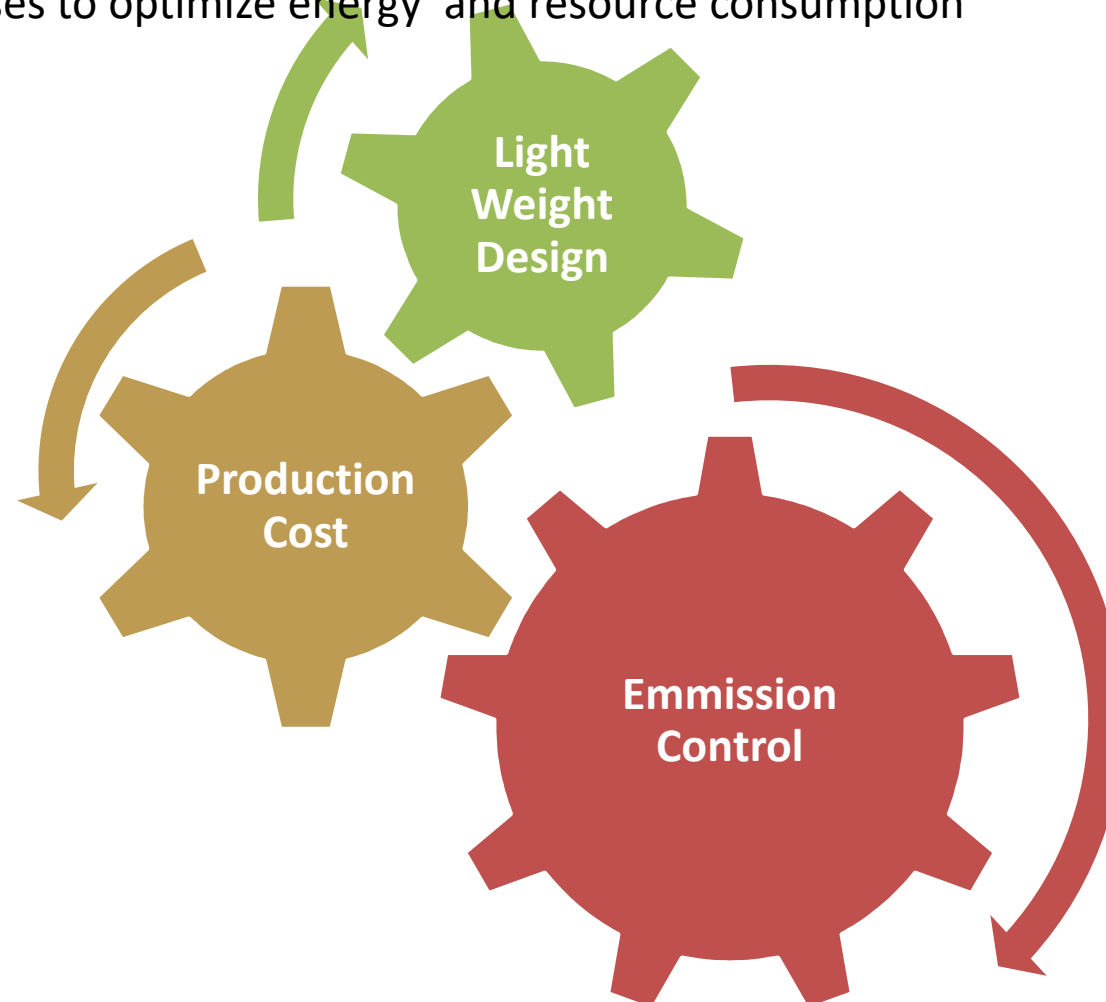
Forging Fold

Simulations avoid energy and resource consumption



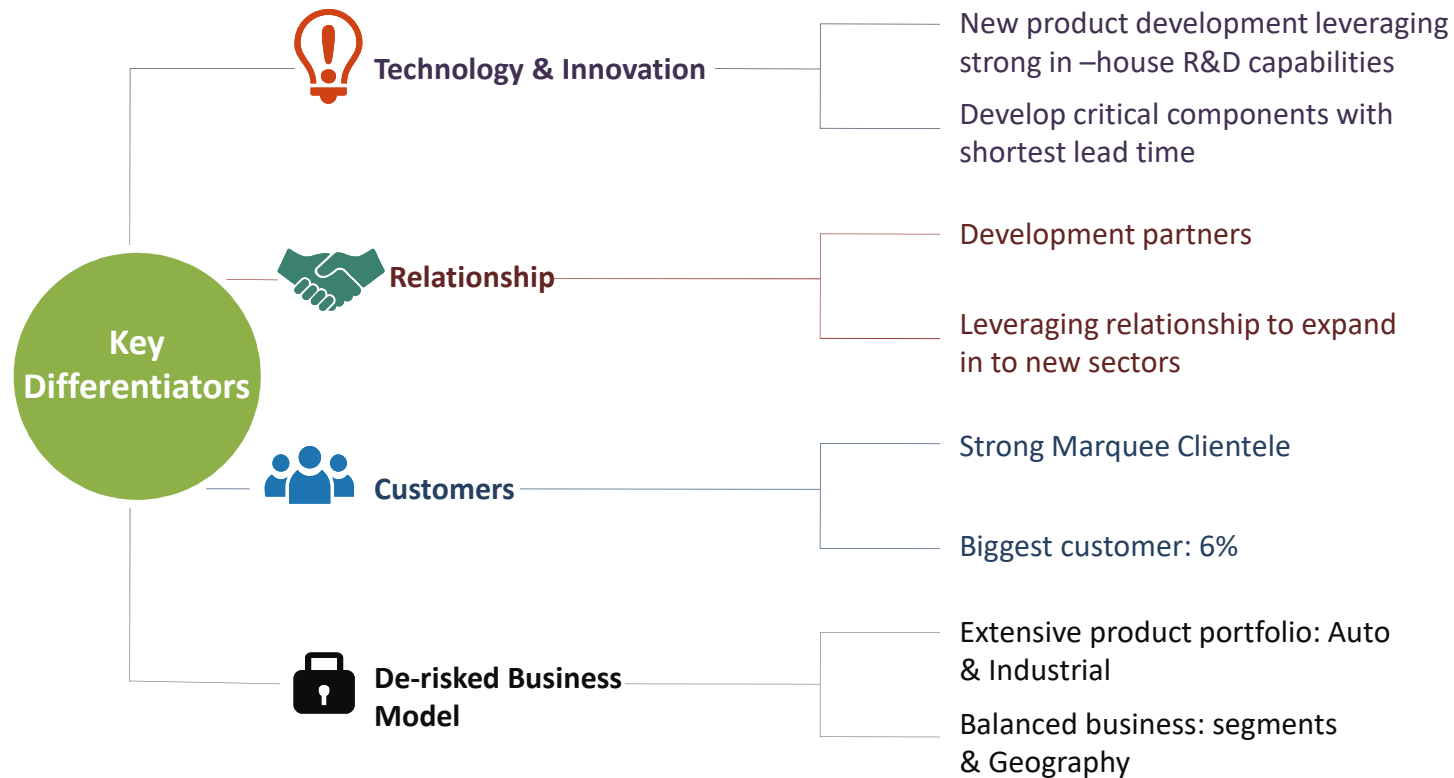
- FORGE3 Group License
- 128-Core-Clusters in India and Germany
- Many Multi-Core Installations

coordinated processes to optimize energy and resource consumption



Research and Innovation

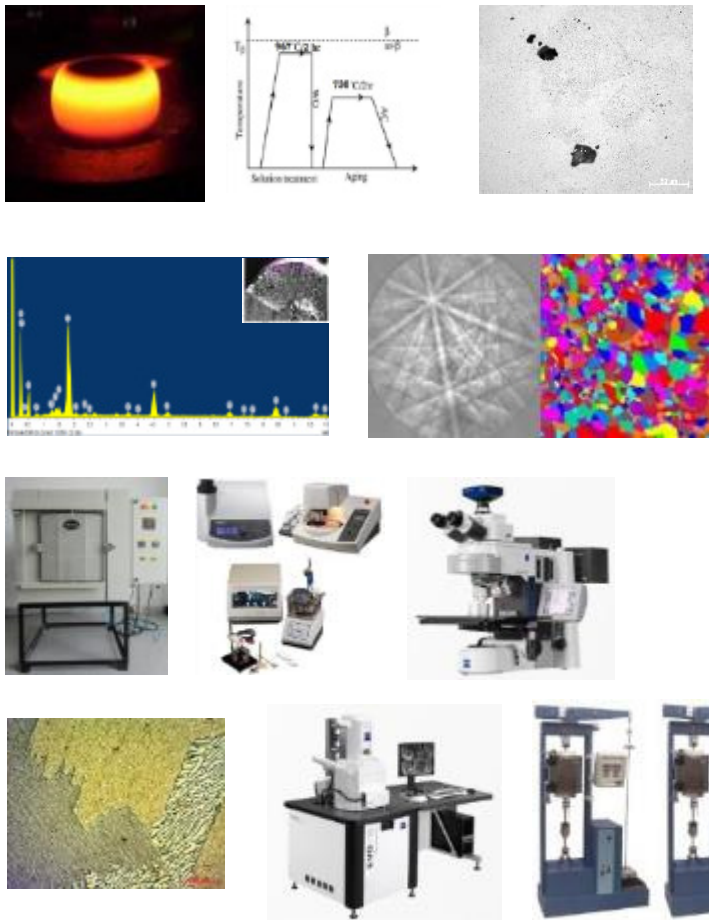
General Fields



**Kalyani Centre for Technology and
Innovation (KCTI, Pune)
Training Capacity**

**BHARAT FORGE
GLOBAL HOLDING**





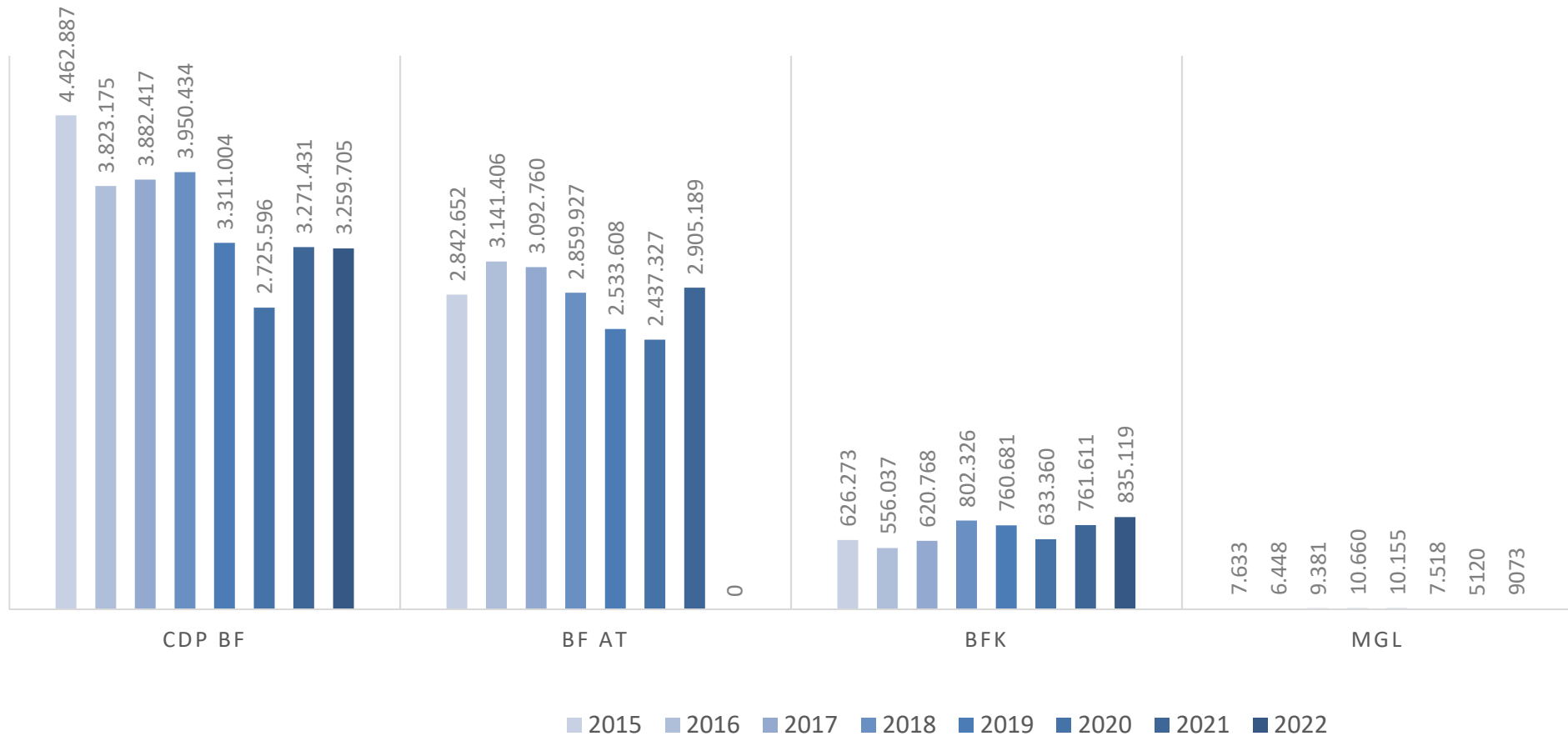
- Advanced Innovation & Research center
- Heat treatment lab
- Metallography Lab
- Optical Microscopy
- Scanning Electron Microscopy
- Mechanical testing lab
- Virtual manufacturing
- Advanced Learning-Technical Library
- Advanced learning courses
- 3D Printing (Plastic and Metals)



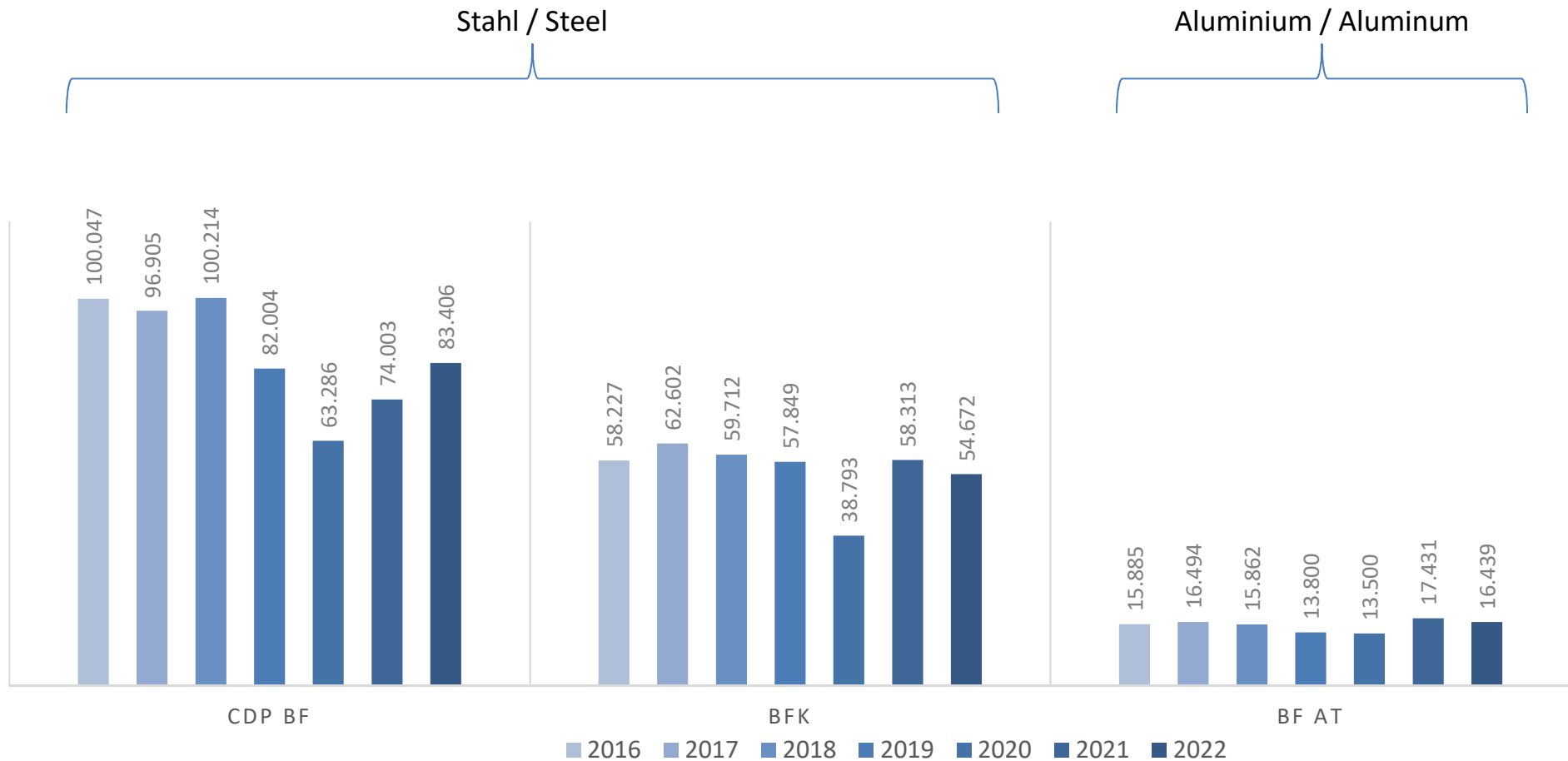
More than 35 post-graduate (Masters and Ph.D) researchers
R&D projects related to product development and process improvement

Ökonomische Dimension Economic dimension

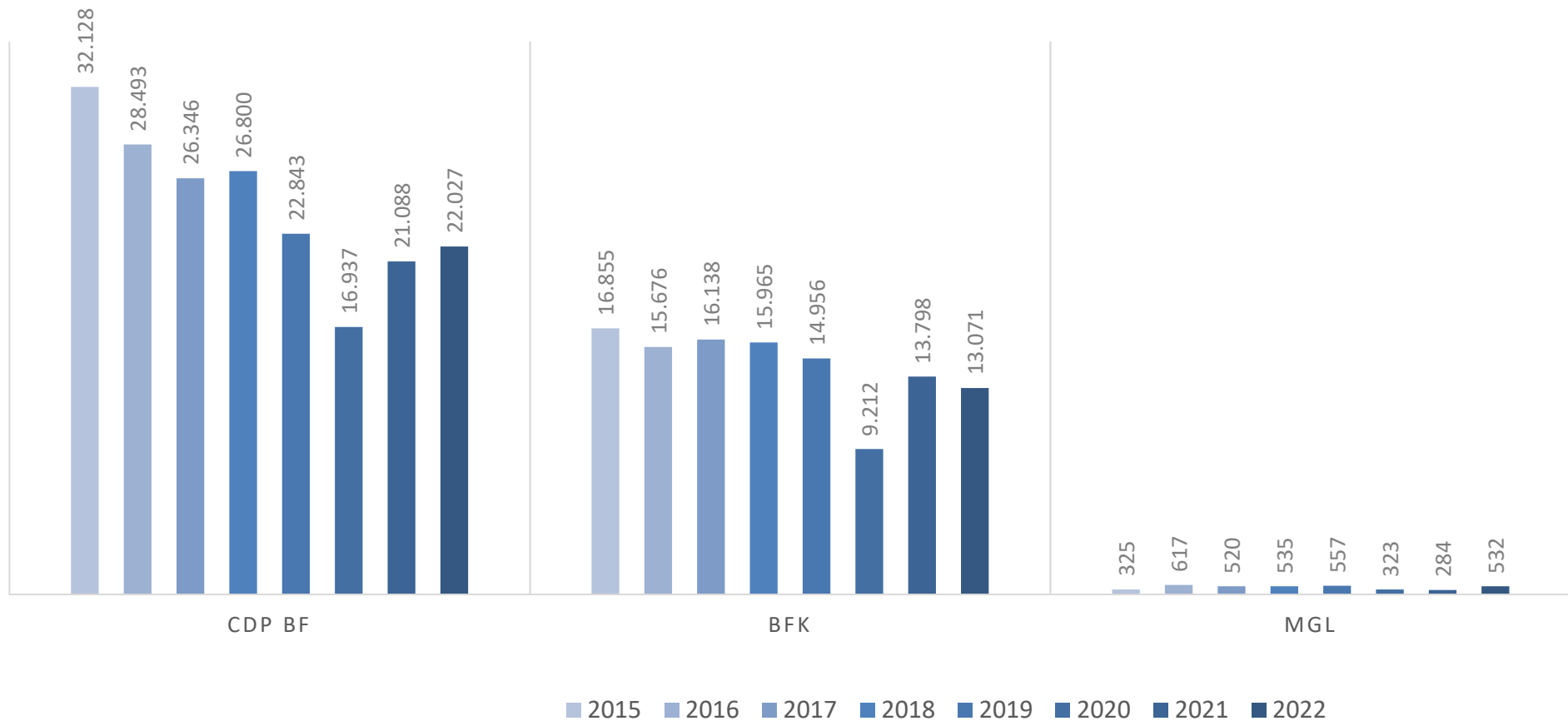
VERKAUFTE PRODUKTE (STÜCK) / SOLD PRODUCTS (PIECES)



MATERIALEINSATZ (TONNEN) / MATERIAL CONSUMPTION (TONS)

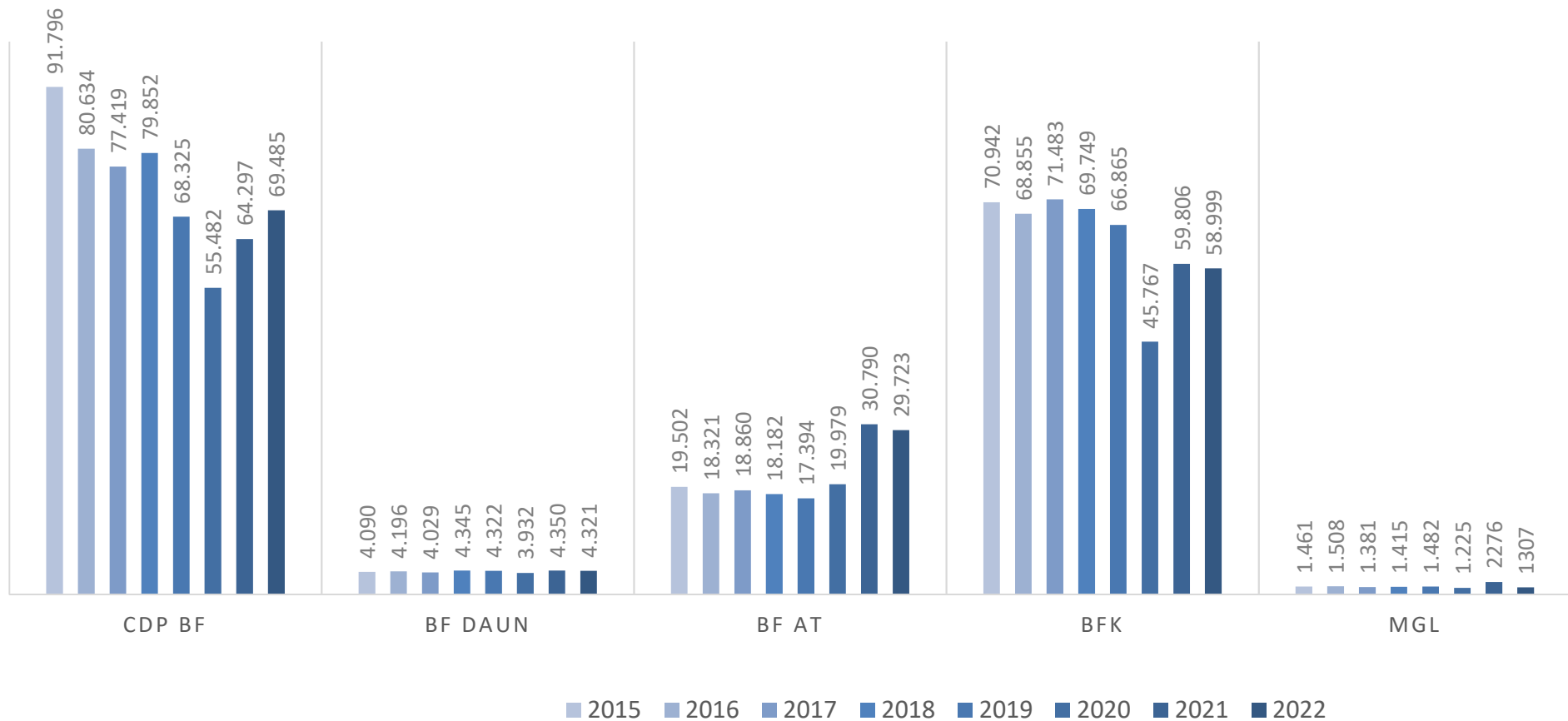


STAHLSCROTT (TONNEN) / STEEL SCRAP (TONS)



Ökonomische Dimension
Economic dimension
Strom / Electrical Power

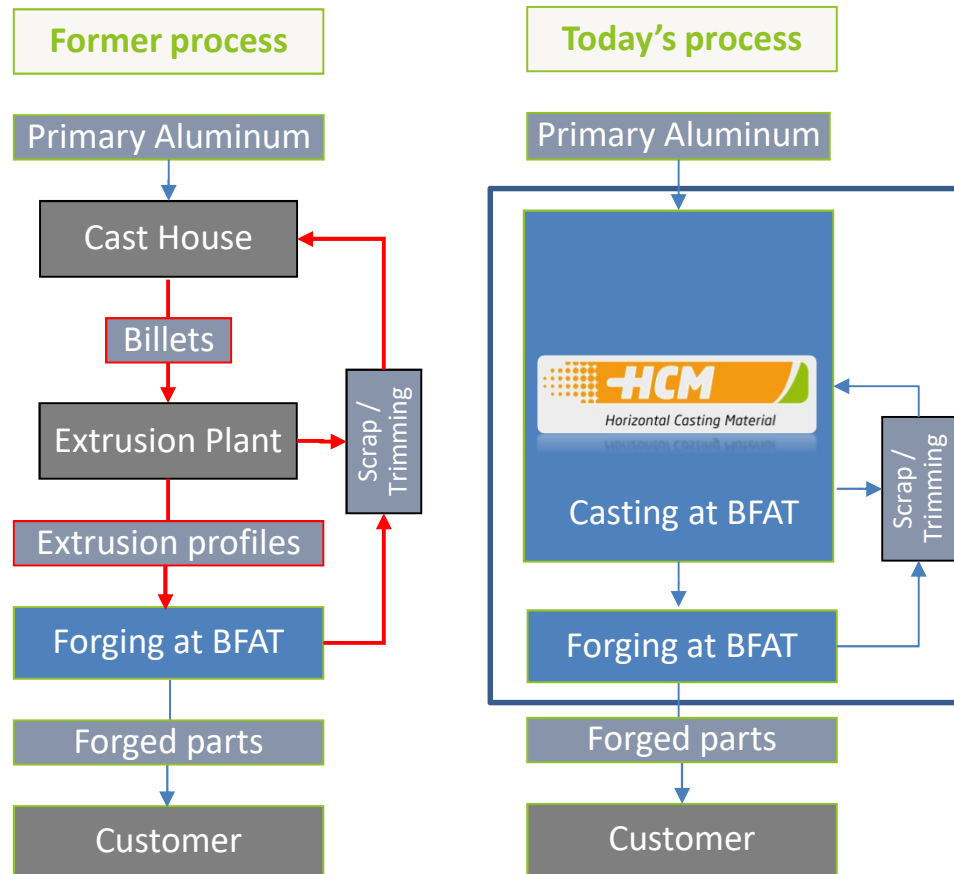
ENERGIEEINSATZ (MWH) / ENERGY CONSUMPTION (MWH)



Ökonomische Dimension

Economic dimension

HCM Process



Elimination of extrusion process including

- billet casting
- heat treatment
- Surface machining

= 40% CO₂ savings

Elimination of excessive transport including transport of scrap and trimming

= 3 ... 5% CO₂ savings

In total savings of up to 45% CO₂ !

Ökonomische Dimension

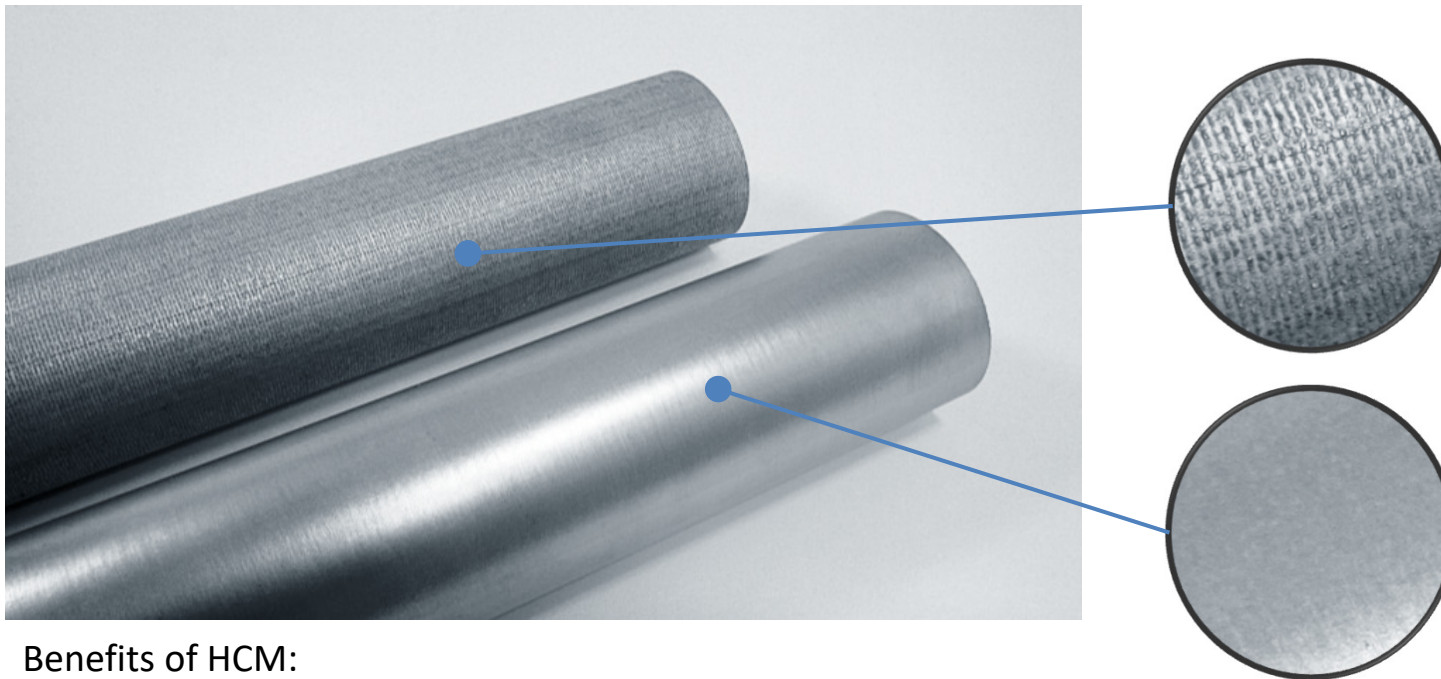
Economic dimension

HCM TECHNOLOGY - creates ADVANTAGES

BHARAT FORGE
GLOBAL HOLDING



HCM Technology - creates advantages, avoids subsequent processes



Benefits of HCM:

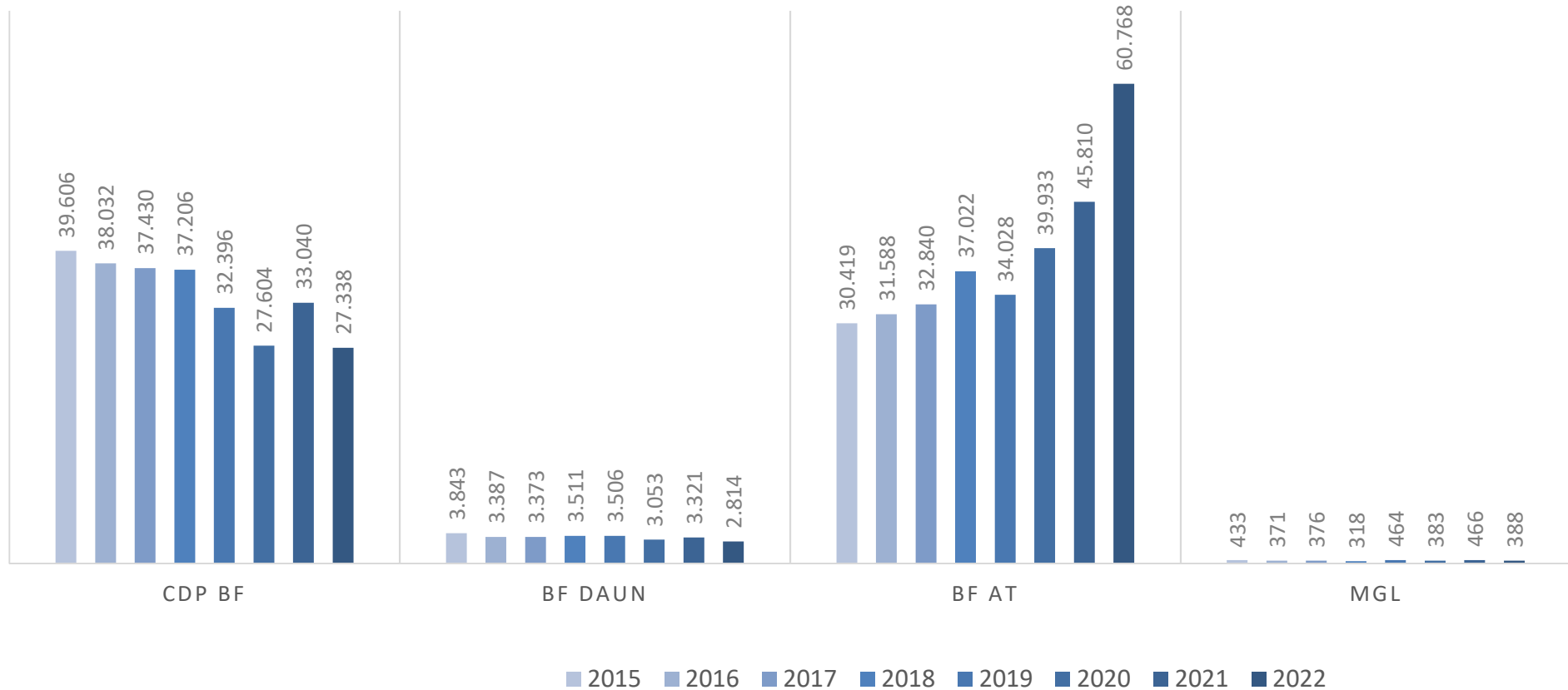
- High class cast surface => no peeling necessary
- Homogenous grain structure => no heat treatment necessary



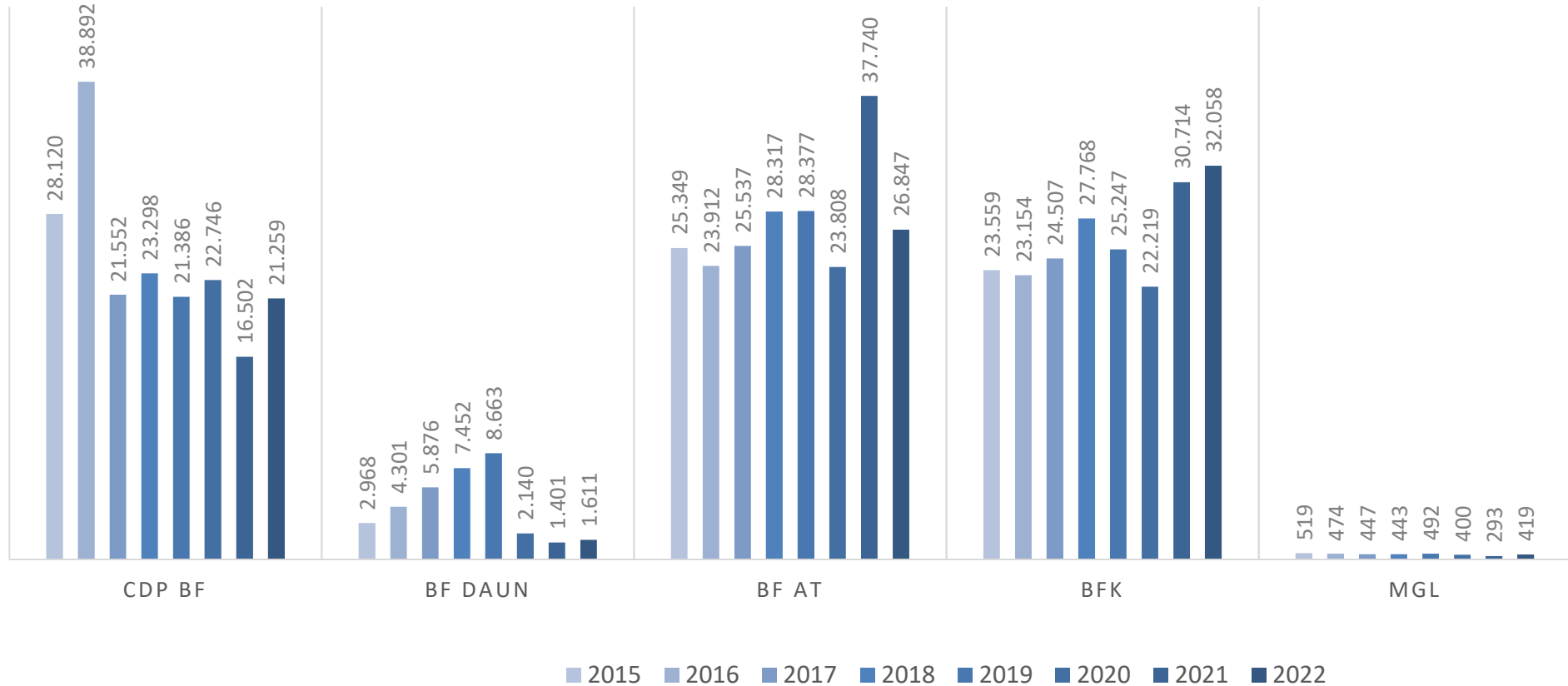
Ökonomische Dimension

Economic dimension

Erdgas (MWh) / Natural Gas (MWh)



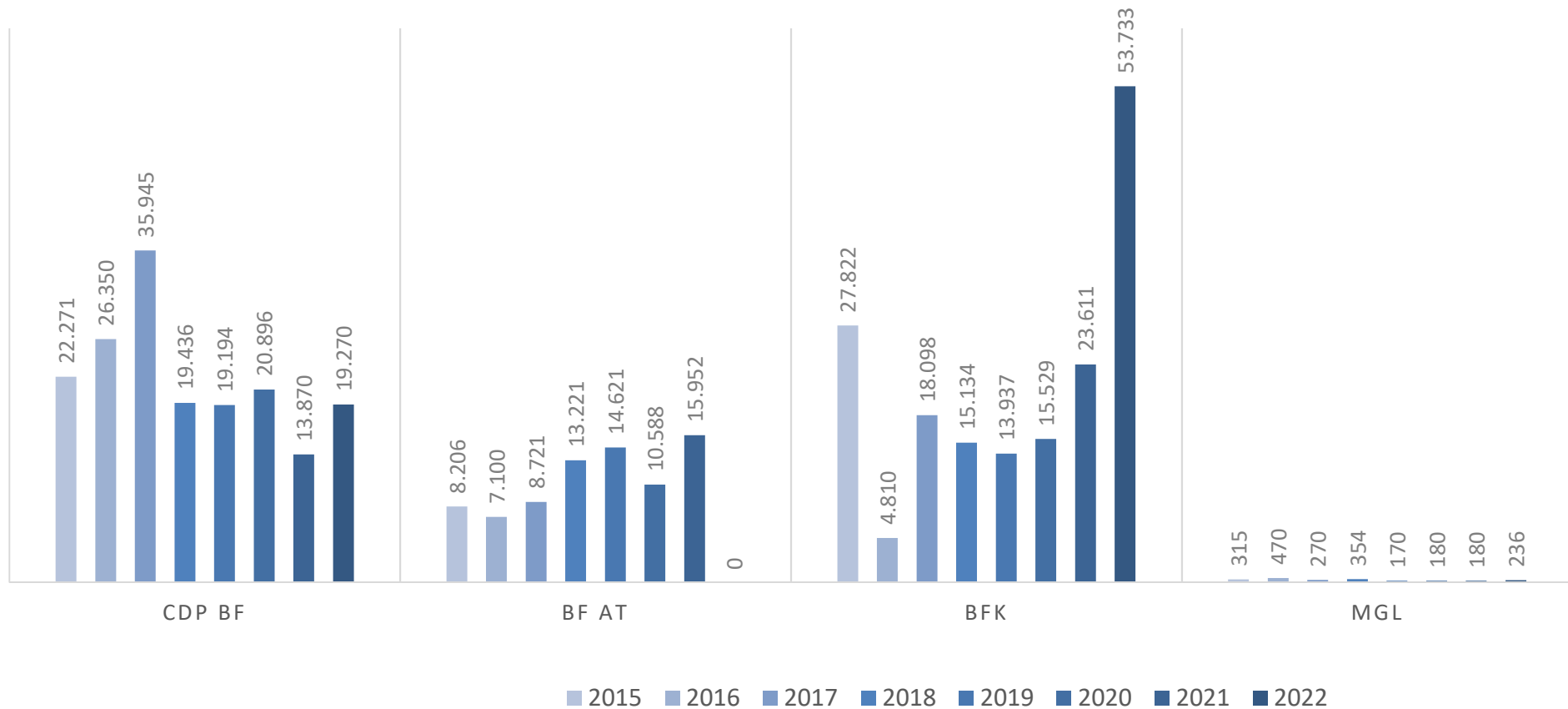
Ökonomische Dimension
 Economic dimension
 Wasser (m³) / Water (m³)



Ökonomische Dimension

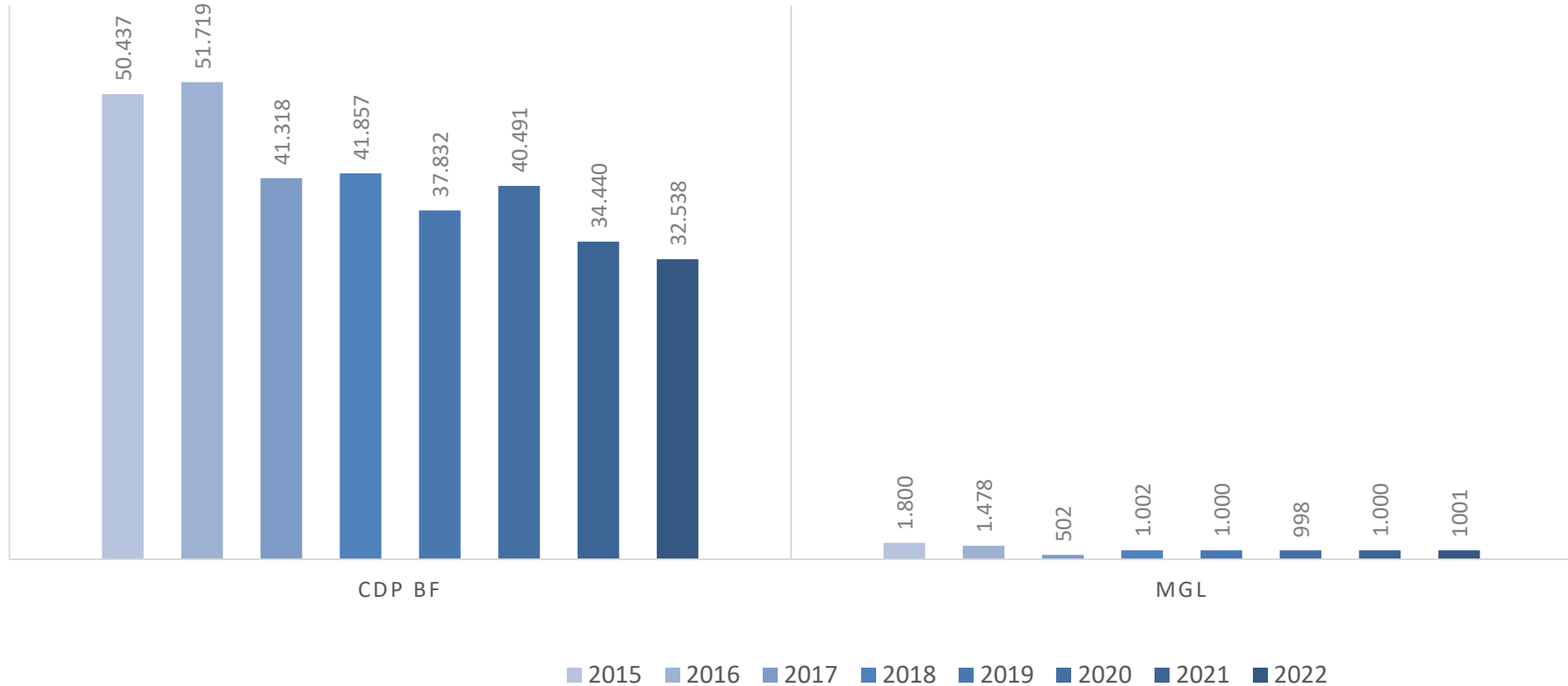
Economic dimension

Abwasser (I) / Waste water (I)



Ökonomische Dimension
Economic dimension
Kraftstoffe (l) / Fuels (l)

BHARAT FORGE
GLOBAL HOLDING



Gesellschaftliche Dimension

Social dimension

Qualifizierung / Qualifying

BHARAT FORGE
GLOBAL HOLDING



Bei Bharat Forge wird Wert auf die Qualifizierung der Mitarbeiter gelegt. Weiterbildung hält Mitarbeiter im Bereich neuer Technologien und optimaler Geschäftsabläufe auf dem Laufenden und treibt den Unternehmensfortschritt. Auf diese Weise ist Weiterbildung ein bedeutender Antrieb für Effizienz und Leistung von unseren Angestellten.

Effizientere Mitarbeiter sind effektiver. Fähigkeiten und Fachwissen werden unter Kollegen ausgetauscht und verbreiten sich so im ganzen Unternehmen. Wissenstransfer spielt innerhalb des Unternehmens eine große Rolle.

Sicherheits- und Gesundheitstraining reduzieren arbeitsbedingte Verletzungen und Krankheiten.

At Bharat Forge, we place great importance on qualifying employees.

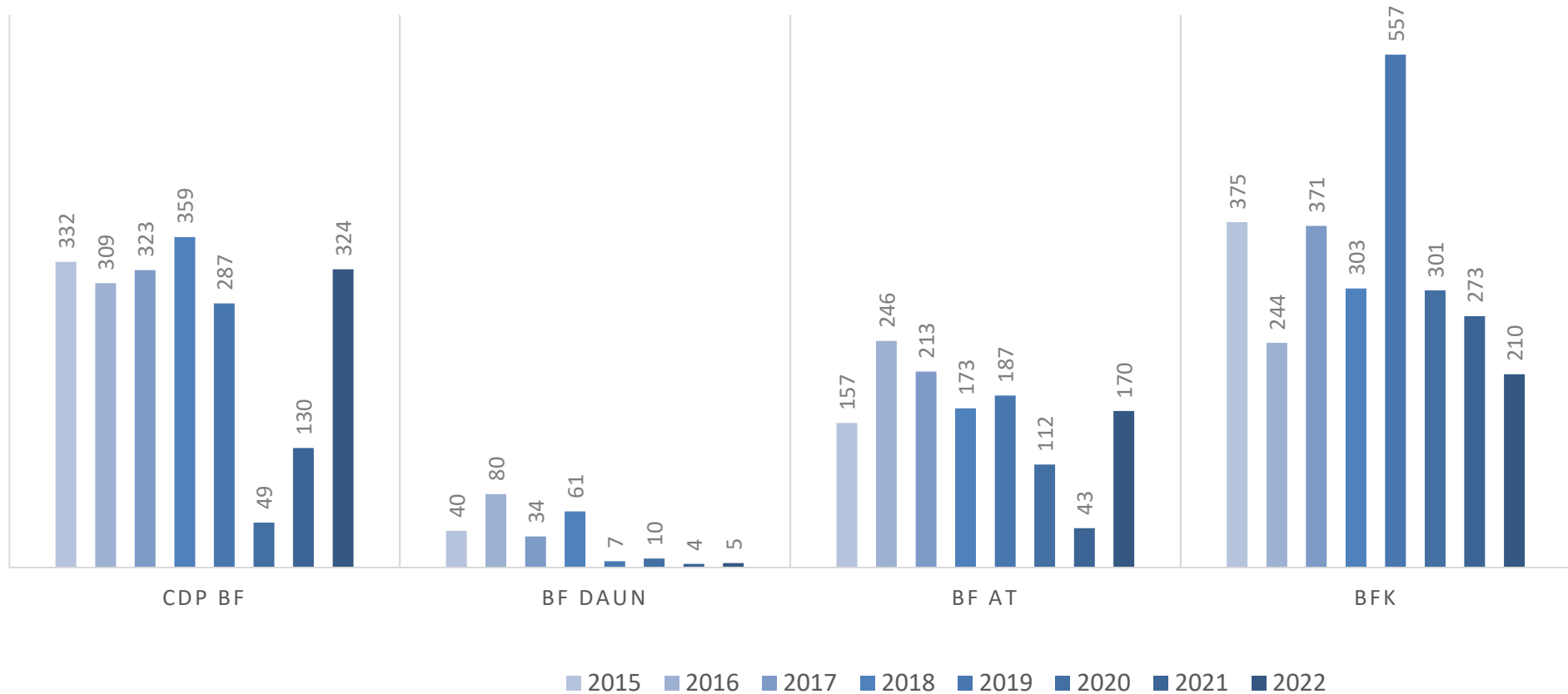
Further education keeps employees up to date with new technologies and optimal business processes and encourages improvements. In this way, training is a major driver of efficiency and performance for our employees.

More efficient employees are more effective. Skills and expertise are shared among colleagues and spread throughout the company. Knowledge transfer plays a major role within the company.

Safety and health training reduces work-related injuries and illnesses.

Gesellschaftliche Dimension
 Social dimension
 Schulungen / Trainings

INTERNAL & EXTERNAL

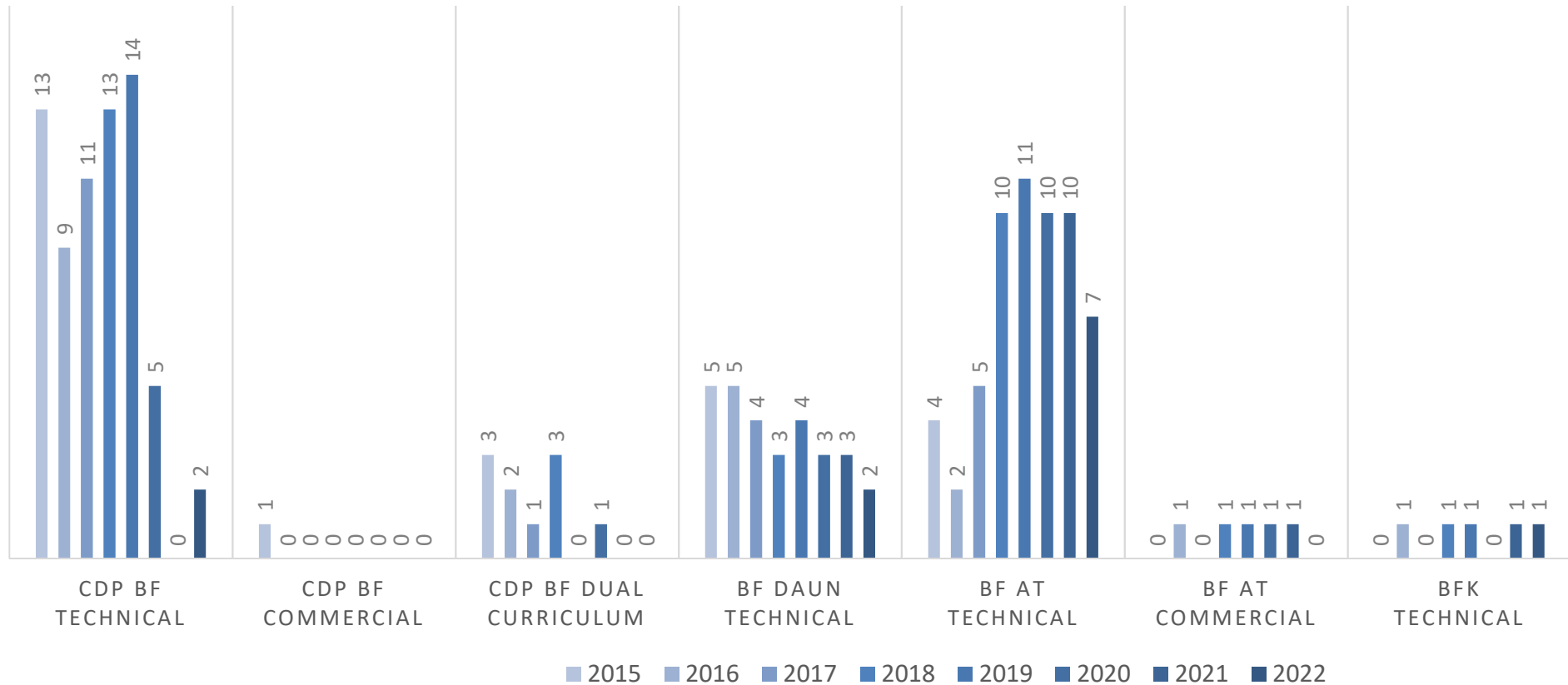


Gesellschaftliche Dimension

Social dimension

Ausbildungsplätze / Apprenticeship

BHARAT FORGE
GLOBAL HOLDING



Managementsystems Certificates – IATF 16949:2016

BHARAT FORGE
GLOBAL HOLDING



Die Einführung und Aufrechterhaltung von Zertifizierungen hilft die Wirksamkeit und Nachhaltigkeit der Prozesse und der Managementsysteme zielgerichtet und systematisch zu bewerten und stetig zu verbessern.

The introduction and maintenance of certifications helps to evaluate and constantly improve the effectiveness and sustainability of processes and management systems in a targeted and systematic manner.

Qualitätsmanagementsystem:

Zertifizierung IATF 16949:2016

Zertifizierung des Werkzeugbaus Daun (BFD) nach DIN EN ISO 9001:2015

Energiemanagementsystem:

Zertifizierung ISO 50001:2018

Arbeits-, Gesundheits- und Umweltschutzmanagementsystem:

Zertifizierung ISO 45001:2018 & 14001:2015

Ergänzende Anforderungen/Kundenspezifische Forderungen

Supplementary requirements/customer-specific requirements (CSR):

Automotive:

z. B. AUDI/VW – Formel-Q-Konkret; Daimler – MBST; BMW; Volvo; MAN; DAF; MAHLE; ZF u. a.

Non-Automotive:

z. B. Deutsche Bahn – (HPQ) Q1;

Die Bharat Forge Global Holding als Holding, hat selbst keine Zertifikate und kann auch nicht nach IATF zertifiziert werden.

Bharat Forge Global Holding as a Holding Company has no certificates and cannot be certified according to IATF.

		2016	2017	2018	2019	2020	2021	2022
VV / sugg. Improvem.	abgegebene / rendered	137	104	49	29	12	19	23
	abgeschl. / completed	133	96	47	23	14	28	46
Workshops	Prozessverb.	0	4	2	3	0	0	0
		0	2	0	0	0	0	0
	SMED (Rüst- / set-up workshop)	0	1	1	0	0	0	0
	GAI (Ganzheitliche Anlagen Instandhaltung)	0	0	0	0	0	0	0
5-S-Audits	% Anzahl durchgef. Audits / amount comp. Audits	78	89	88	73	23	13	73
	Ø Punkte / points (v. 100)	79	82	87	84	81	83	82
6-δ	laufende / ongoing	0	3	2	2	0	0	0
	abgeschl. / completed	0	1	0	0	0	0	0

Bharat Forge Corporate Social Responsibility (CSR)

CSR is an integration of social and environmental objectives into business objective. Sustainability is the soul of CSR. The journey of CSR started in Bharat Forge in 1970 when Community Centers were established in different communities for empowerment of women. CSR has been evolved over decades at BFL with the simple objective of 'Giving Back to the society'.

"The society has contributed so much to our growth over the last 50 years. We, in return, should take actions for its betterment."

Babasaheb Kalyani

CMD, Bharat Forge Limited

We have started our CSR initiatives in specific areas which include - Village development, Promotion of Education, Skills Development, vocational training, environmental and ecological protection, health and hygiene, character building through sports.

Bharat Forge Corporate Social Responsibility (CSR)

43 years ago, Bharat Forge initiated a movement towards the upliftment of community, women and children. It was a movement led not with marches, but simple heart-to heart conversations.

Through all these years, we kept widening our focus and reached out to more and more people. We stood beside them, guiding them through change. And after four decades of determined, focused and result-oriented efforts, we touched the lives of millions.

Even though the CSR Act came into being in 2013, Bharat Forge has been shouldering the responsibility of social contributions from year 1978 when we set up two community centers for the socio-economic development of women. Furthermore, we ensure active compliance to all CSR legislations and requirements under all circumstances.

As a corporate, this belief to serve the community continues to grow stronger with every goal we achieve.

Gesellschaftliche Dimension / Social dimension
BFL India, Corporate Social Responsibility
Projects

BHARAT FORGE
GLOBAL HOLDING



- **VILLAGE DEVELOPMENT**
- **EDUCATION**
- **SKILL DEVELOPMENT**
- **WOMEN ENPOWERMENT**
- **SPORTS INITIATIVES**



Gesellschaftliche Dimension / Social dimension

BFL India, Corporate Social Responsibility

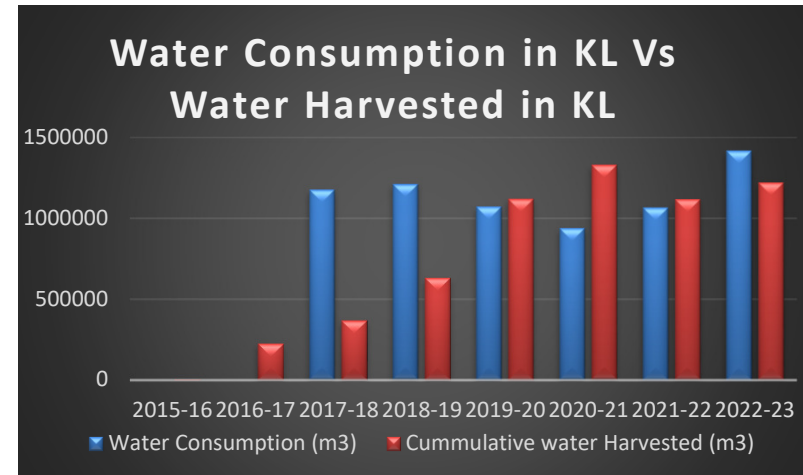
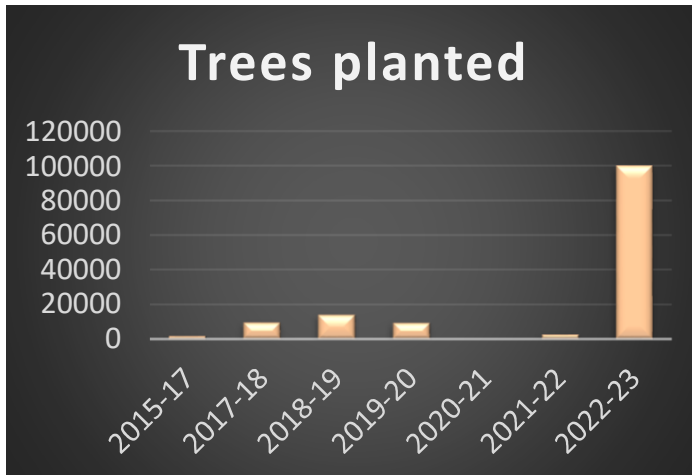
Impact of village development project

BHARAT FORGE
GLOBAL HOLDING



Input	Activities	Output	Outcome	Impact
<ul style="list-style-type: none"> • Financial investment • Human & Material resources 	<ul style="list-style-type: none"> • Baseline survey • Awareness & Ownership of the community. • Construction of check dams & bandharas. • Widening and deepening canals & riverbeds. • Pipelines & drinking water system. 	<ul style="list-style-type: none"> • 3,27,600 cub. mtrs. silt removed. • 2,207 TCM liters water stored. • 16,363 Acres land brought under irrigation. • 67 km Internal WBM & Concrete roads constructed. • Land Levelling of '9229.72 R'[230 Acre] • 1, 90,00 rural lives touched 	<ul style="list-style-type: none"> • Increase in water availability. • Positive changes in crop pattern, crop diversity. • Enhance agriculture & livestock productivity. • Reversed Migration • Setting up of processing units • Availability of fertile land for cultivation 	<ul style="list-style-type: none"> • Improved quality of life of rural community • Higher family income. • Employment / entrepreneurship opportunities for local youth • Farming opportunities to the villagers Who never cultivated their land • Thinly populated villages getting populated
<p>Resources</p>		<p>Results</p>		

Sustainability- connecting CSR projects with ESG- Trees Planted and Water Harvested



- Approximately 21 kg CO₂ is absorbed by 1 full grown tree in a year
- Trees Planted under CSR activity are getting accounted in GHG emission calculation of BFL, trees will offset the carbon emission done by BFL
- GHG emission activity is in last stage of completion, done by DQS.

- Water Harvested under CSR activities is getting accounted in BFL water risk assessment, water harvested will help BFL to become water neutral and then water positive.
- Water risk assessment is in last stage of completion, done by General Carbon.

Gesellschaftliche Dimension / Social dimension

BFL India, Corporate Social Responsibility

Desilting of bandhara - Village Hivare, Taluka Koregaon

BHARAT FORGE
GLOBAL HOLDING



- Hivare is poor & drought prone village.
- After desilting & repairing work the total water storage capacity of the structure is 27 TCM.
- This intervention is benefiting to 3,300 villagers.



Pazar Talav at Village Hivare

Gesellschaftliche Dimension / Social dimension

BFL India, Corporate Social Responsibility

Desilting Work - Village Nagewadi, Taluka Koregaon

BHARAT FORGE
GLOBAL HOLDING



- After desilting of water reservoir in the Nagewadi village, ample amount of water is now available for drinking and agricultural purpose.
- Total water storage capacity is 21 TCM.
- This has benefitted to 2,200 villagers.



Pazar Talav at Village Nagewadi.

Gesellschaftliche Dimension / Social dimension

BFL India, Corporate Social Responsibility

BHARAT FORGE
GLOBAL HOLDING



Tree Plantation Drive & Waste management
2Planted more than 1 lakh trees in the communities

- Also installed 500 composter planters in commutes for waste management

022



Gesellschaftliche Dimension / Social dimension
BFL India, Corporate Social Responsibility

BHARAT FORGE
GLOBAL HOLDING



**JOURNEY TOWARDS
GREEN VILLAGES**



Green Village is the concept where we focus on **Sustainable Development** of the village. To achieve that goal one has to work on all aspects of development which includes working with People, strive for Economic Prosperity, working for Peace, Partnering with different stakeholders, and Protecting the Planet.



Green Village is one which offers access to

- Clean Energy
- Adequate Water
- Proper Waste Management Mechanism
(No plastic)
- Hygienic Sanitation
- Basic Education
- Good Healthcare
- Good Infrastructure

Green Village also ensures

- Low carbon footprint
- High green cover
- Livestock management
- Self reliant society
- Community level social regulation

Gesellschaftliche Dimension / Social dimension

BFL India, Corporate Social Responsibility

Journey Towards Green Villages

BHARAT FORGE
GLOBAL HOLDING



- We have approached IGBC (Indian Green Building Council) - CII at Hyderabad. It is the only agency which assesses the villages for Green Rating.
- We also approached NIRD (National Institute of Rural Development) to understand more about Green Concept from government's perspective.
- Through IGBC we are currently assessing 06 villages and following is the trend.
- 1st round of assessment is completed where 3 villages are in the path to get **Platinum** rating which is the recognition of **Global Leadership** and another 3 are in the category of **Gold** having the recognition of **National Excellence**.

Sr No	Name of the village	Points secured after 1 st assessment	Rating
1	Dhamner	79	Towards Platinum
2	Saygaon	73	Towards Patinum
3	Nagzari	72	Towards platinum
4	Takale	67	In Gold
5	Targaon	64	In Gold
6	Rui	62	In Gold

Gesellschaftliche Dimension / Social dimension

BFL India, Corporate Social Responsibility

Journey towards Green Village – Case Study

BHARAT FORGE
GLOBAL HOLDING



Reviewed the villages

- Based on the criteria of Green Village

Selection of villages

- Identified 6 villages in initial phase (Pilot run)

Infra Gap Analysis

- Done by team members of IGBC

Actions Suggested

- Working on the suggestions given by IGBC

Announcement of rating

-By end of June

Sr. No.	Green Village Parameters	Work Done	Points Secured / Total
1	Health & Hygiene	- Cancer screening camps - Strengthening of PHC - Internal gutters	23 / 27
2	Village Infrastructure	- Drinking water pipeline - Tree Plantation	21 / 30
3	Water Conservation	NA	09 (NA)
4	Energy Availability & Efficiency	- Installation of solar panels	13 / 16
5	Materials & Resources	- Painting work – local artist - Tree guards	05 / 05
6	Social Community Actions	- Swachha Sundar majhe Gaon competition - Facilitation in formation of Village Committees	08 / 08
7	Green Innovation	- Eco plastic bottles	03 / 05
Total Points Secured			73 / 100

Points	Certification Level	Recognition
40-49	Certified	Good Practices
50-59	Silver	Best Practices
60-79	Gold	National Excellence
80-100	Platinum	Global Leadership

After first round of assessment the village has secured **73 points** which is just **7 Points** away from **Platinum Rating**

Village: Saygaon (District – Satara)

Total Households : 99

Total Population : 472

Gesellschaftliche Dimension / Social dimension
BFL India, Corporate Social Responsibility
Work of BFL in the village

**BHARAT FORGE
GLOBAL HOLDING**



Construction of Internal Gutters and Tree Plantation



BFL's Infra work changed the view of village

Gesellschaftliche Dimension / Social dimension
BFL India, Corporate Social Responsibility

BHARAT FORGE
GLOBAL HOLDING



Visit of Mrs. Sunita Kalyani to Saygaon



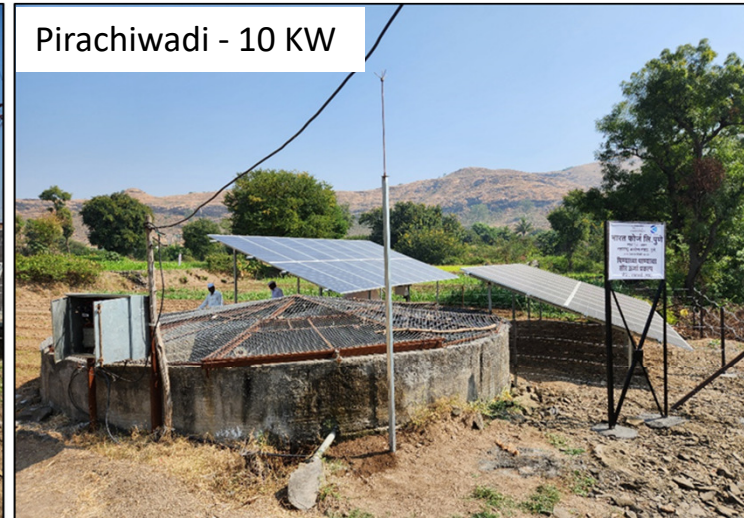
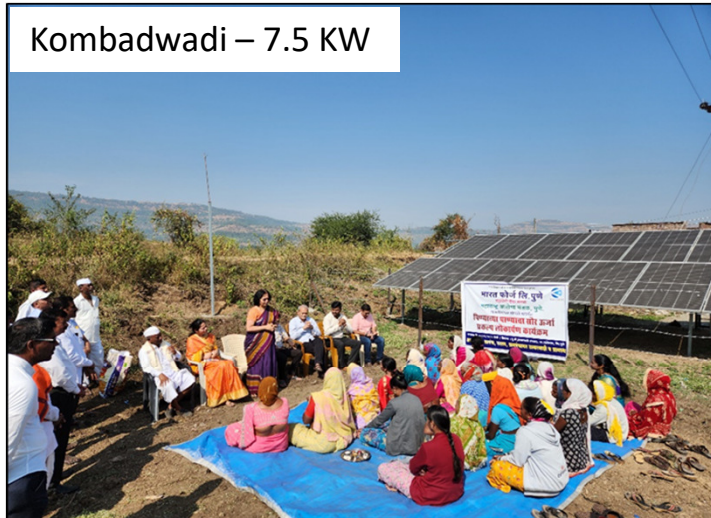
Solar water system - 12 KW



Drinking water pipeline

Gesellschaftliche Dimension / Social dimension
BFL India, Corporate Social Responsibility
Solar project work

BHARAT FORGE
GLOBAL HOLDING



Solar system at Kombadwadi & Pirachiwadi [Thakarwadi]



Solar system at Saygaon & Takale

Gesellschaftliche Dimension / Social dimension
BFL India, Corporate Social Responsibility
Health Initiatives

BHARAT FORGE
GLOBAL HOLDING



Telemedicine Project - *Transferring Technology to Villages* ...

7 Telemedicine centers are running in the villages benefitted to more than 11000 villagers



Gesellschaftliche Dimension / Social dimension
BFL India, Corporate Social Responsibility
Education & Skill Development Initiatives

BHARAT FORGE
GLOBAL HOLDING



Infrastructure Development & Construction of School buildings



New English school, Salave [Patan]



Z P School, Sonori [Purandar]



Gadagenath high school, Kole [Karad]



New english school, Salave [Patan]

Gesellschaftliche Dimension / Social dimension
BFL India, Corporate Social Responsibility
Farmers training with ADT - Baramati

**BHARAT FORGE
GLOBAL HOLDING**



Training on dairy products



Dairy Project Visit



Training at KVK - Baramati



Training of SHGs at KVK - Baramati



Training at KVK - Baramati

Gesellschaftliche Dimension / Social dimension

BFL India, Corporate Social Responsibility

Centre of Excellence (CoE) at Vidya Pratishthan

- CoE includes different labs like Robotics, IoT , AIML, Data Analytics and Computer Vision.
- Incubation Centre will create the entrepreneurial ecosystem by providing support to the budding entrepreneur.
- Students will undergo through various trainings on different technologies and we are ensuring **60% girl students' participation.**
- 5% of students to start entrepreneurial activity.



IoT Lab



Reading Section



Data Analytics lab



Inauguration of COE Lab in presence of Mr. Gadkari 7 higher delegates

Gesellschaftliche Dimension / Social dimension

BFL India, Corporate Social Responsibility

Mentorship Program

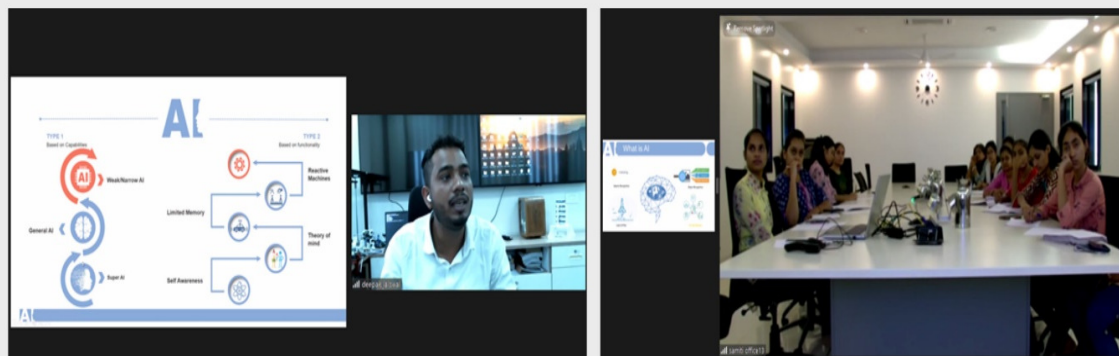
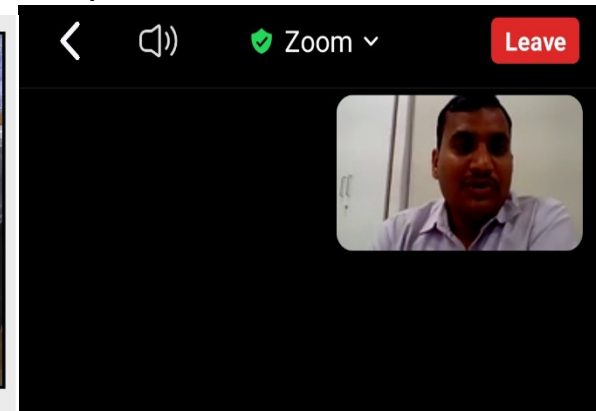
**BHARAT FORGE
GLOBAL HOLDING**



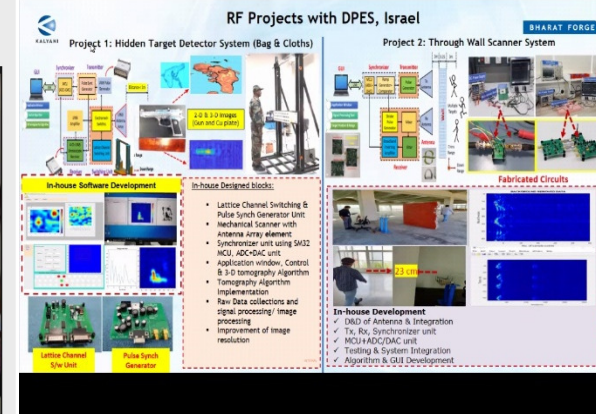
- We are supporting the education of **20 Girl Students** through **Mentorship Program**
- These students are pursuing **Engineering or Diploma** courses in different trades including Mechanical, Electrical, Metallurgy, E&TC and Computer.



Mentor mentee one on one interaction



Online session by Mentor on Artificial Intelligence



Online session by Mentor

Gesellschaftliche Dimension / Social dimension
BFL India, Corporate Social Responsibility
NGO MEET 2023

BHARAT FORGE
GLOBAL HOLDING



NGO Partners meeting with our CMD- Presentation of work & guidance from CMD

Gesellschaftliche Dimension / Social dimension
BFL India, Corporate Social Responsibility
BFL CSR Awards 2022-23

BHARAT FORGE
GLOBAL HOLDING



Amity CSR Award 2022

Bharat Forge was declared the winner of the prestigious “ Amity CSR Award ”, 2022 in the Manufacturing Sector category on October 29th, 2022. We were declared winners among 54 companies that participated, This Award was given at Amity Global Business School, Pune.



Best CSR Project Award 2023

Bharat Forge Limited received the "Best CSR Project of the Year Award 2023" by UBS Forum in the 7th Edition of Corporate Social Responsibility Awards, held on 14th March 2023 at ITC Grand Maratha, Mumbai. We're grateful for this recognition and thank our team and partners for their dedicated efforts.

Die Bharat Forge Gruppe und Bharat Forge Global Holding für die zugeordneten Unternehmen haben Regelungen zur Korruptionsprävention und Compliance.

Compliance wird in diesem Sinne als regelkonformes Verhalten von Unternehmen und Mitarbeitern verstanden. Der Begriff Compliance wird verwendet, um die Einhaltung juristischer Vorschriften, aber auch freiwillige Kodizes im Unternehmen zu umschreiben.

Als Ziel der Compliance ist die Steigerung der Effektivität durch klare Regeln sowie die Risikominimierung anzuführen.

Die Erweiterung des Compliance Verständnisses auf die Felder des ganzheitlichen Risikomanagements und des Qualitätsmanagements schafft ein integriertes Präventionssystem, das durch unternehmerische Steuerungsmodule präventiv auf die Non-Konformität von Vorgaben wirkt und ein ordnungsgemäßes Verhalten sicherstellt.

The Bharat Forge Group and Bharat Forge Global Holding for the associated companies have regulations on corruption prevention and compliance.

Compliance is in this sense understood as compliant behavior of companies and employees. The term compliance is used to indicate to comply with legal regulations as well as voluntary codes in the company.

The goal of compliance is the increase of the effectiveness by clear rules as well as to minimize risks.

The extension of compliance understanding to the fields of holistic risk management and quality management creates an integrated preventive system which -through entrepreneurial control modules- affects preventative the non-compliance of prescriptions and ensures proper behavior.

Mitgeltende Dokumente sind:

- Verhaltenskodex für Mitarbeiter;
- Arbeitsdokumente zur kartellrechtskonformen Arbeit;
- Anforderungen an Einladungen;
- Guideline zur kartellrechtskonformen Durchführung von Sitzungen;
- Verhaltensregeln für den Durchsuchungsfall;
- Supplier Code of Conduct;
- Whistleblower Richtlinie Bharat Forge.

Die Geschäftsführung ist sich der Bedeutung dieser Thematik bewusst und hat Compliance Officer für jede Gesellschaft berufen.

Sie achten auf die Konformität der Regeln und unterstützen die Mitarbeiter bei der Umsetzung und der Einhaltung selbiger.

Regelmäßige Schulungen stellen sicher, dass die Mitarbeiter informiert, qualifiziert und sensibilisiert sind.

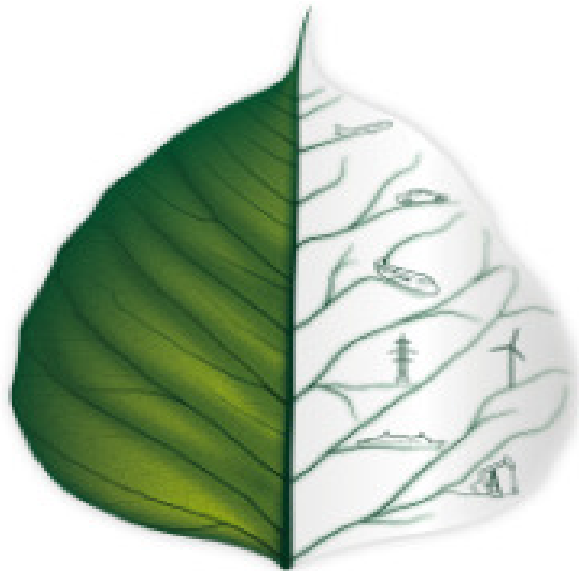
Other applicable documents are:

- Code of Conduct for Employees;
- Working documents on antitrust compliant work;
- Invitation requirements;
- Guideline on antitrust-compliant conduct of meetings;
- Behavior in cases of search;
- Supplier Code of Conduct;
- Whistleblower policy Bharat Forge.

The management is aware of the importance of this topic and has appointed Compliance Officers for each company.

They pay attention to the conformity of the rules and support the coworkers with the implementation and compliance thereof.

Regular training ensures that employees are informed, qualified and sensitized.



innovation at the heart

BHARAT FORGE



Thank you!